

**FOR LEASE** Available Immediately



# Rossville Commons

US 40 & Rossville Boulevard / Rosedale, MD 21237

## Overview

Prominent anchor opportunity at Pulaski Highway and Rossville Boulevard in the Golden Ring trade area of Baltimore County. Rossville Commons features pylon signage, excellent visibility and ample parking.

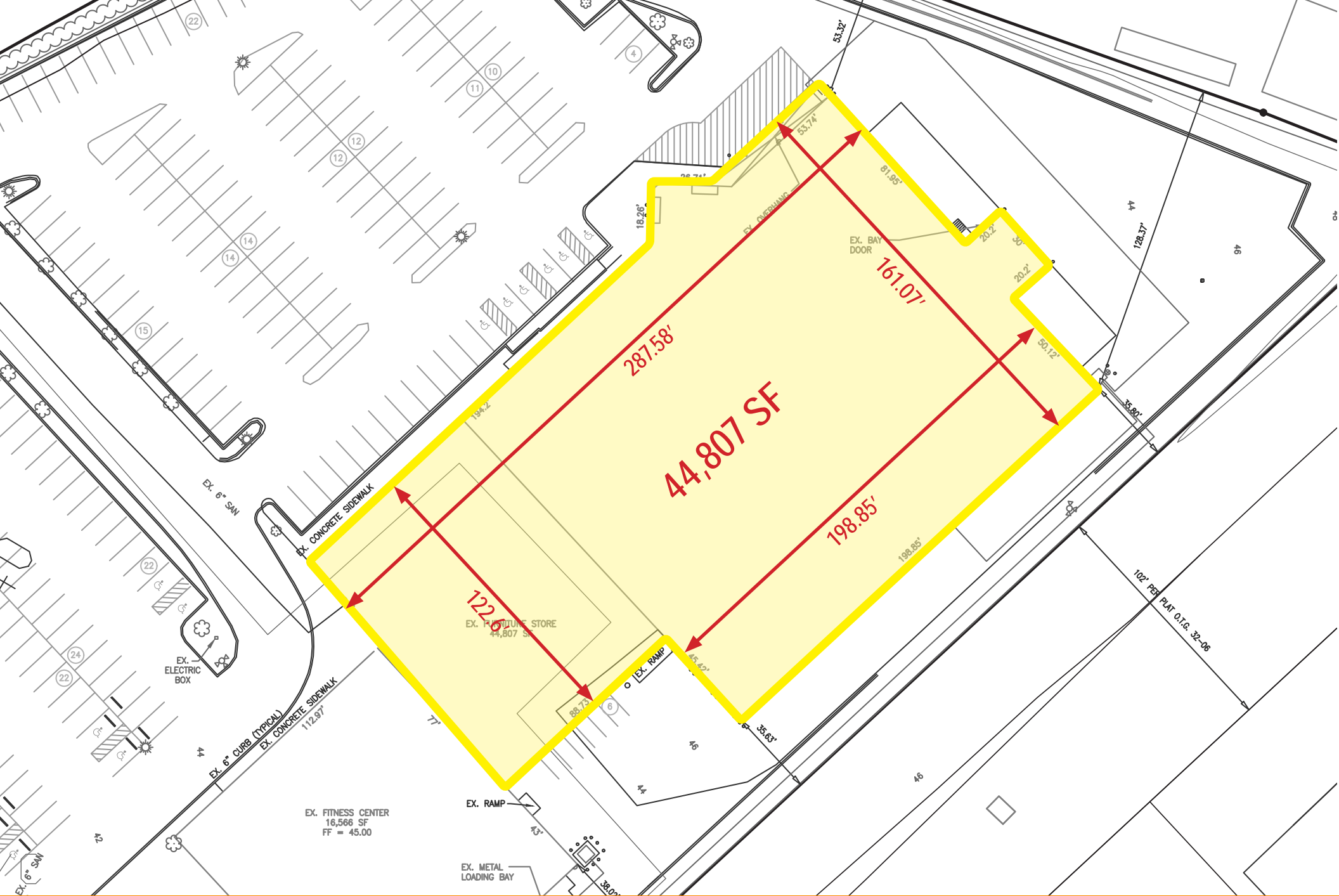
## Quick Facts

- Availability** Immediate
- Size** 44,807 square feet
- Rental Rate** Negotiable
- Net Charges** RET \$1.66/SF; CAM & INS (2025 budget) \$3.28/SF
- Zoning** BR-IM, BR-AS
- Parking** 149 spaces
- Co-Tenants**



2025 Demographics	1 mile	3 miles	5 miles
POPULATION	<b>7,227</b>	<b>102,479</b>	<b>299,313</b>
HOUSEHOLDS	<b>2,817</b>	<b>39,582</b>	<b>117,344</b>
AVG. HH INCOME	<b>\$90,597</b>	<b>\$93,239</b>	<b>\$95,603</b>
DAYTIME POPULATION	<b>10,238</b>	<b>91,812</b>	<b>244,697</b>
TRAFFIC COUNT	<b>46,682 AADT</b> (Pulaski Highway)	<b>17,845 AADT</b> (Rossville Boulevard)	









# Interested? Contact:

## Andrew Segall

✉ [asegall@segallgroup.com](mailto:asegall@segallgroup.com)

☎ 410.753.3947

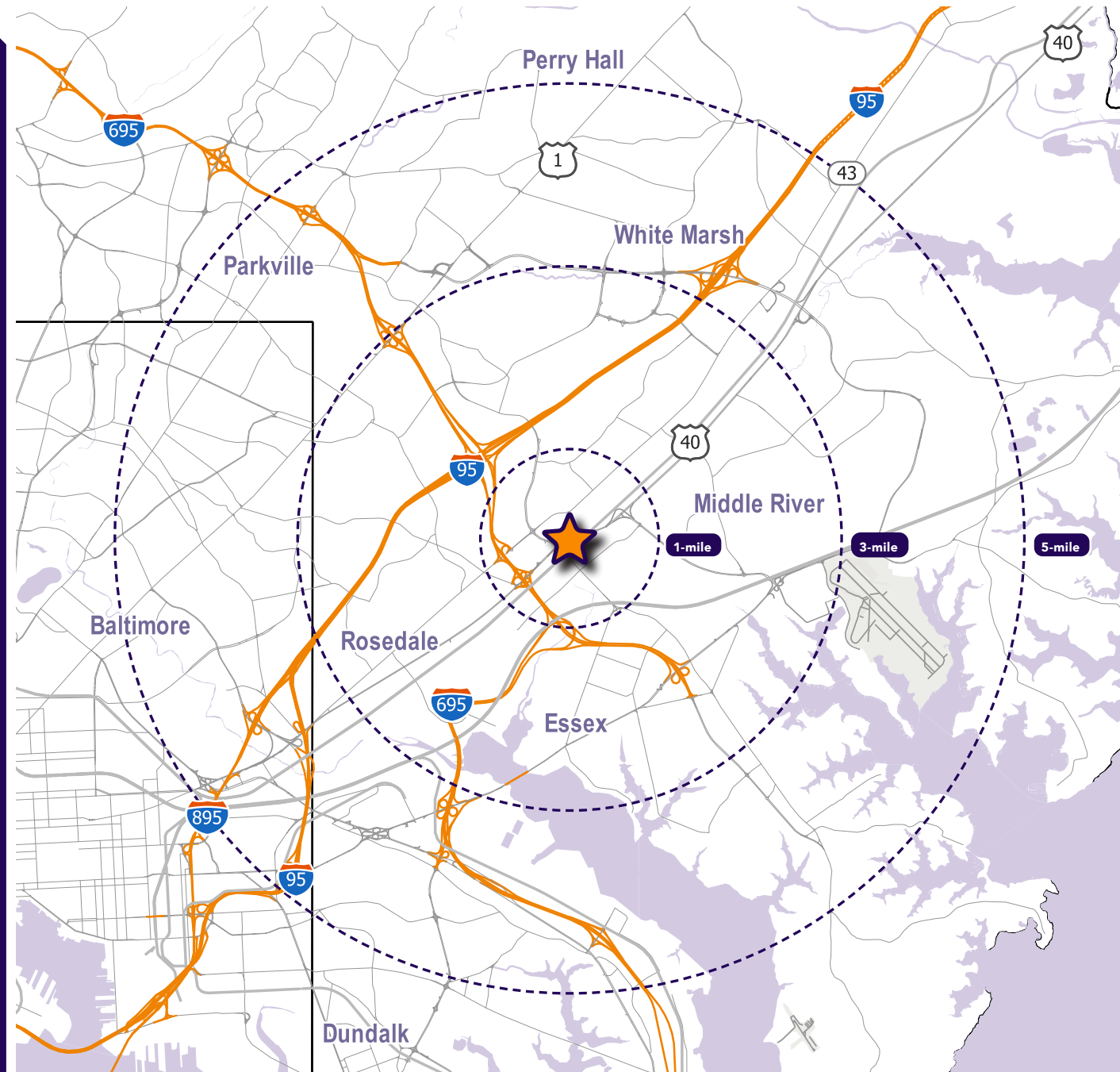
📱 410.960.0361

## Jonathan Garritt

✉ [jgarritt@segallgroup.com](mailto:jgarritt@segallgroup.com)

☎ 410.753.3942

📱 443.223.0662



### Maryland

605 South Eden Street  
Suite 200  
Baltimore, MD 21231  
410.753.3000

### DC • Northern VA

8245 Boone Boulevard  
Suite 200  
Tysons, VA 22182  
202.833.3830

### Richmond

4870 Sadler Road  
Suite 100  
Glen Allen, VA 23060  
804.336.2501

### Online

[www.segallgroup.com](http://www.segallgroup.com)

