

**FOR LEASE** Available Q3 2024

**Available**  
1,500 SF - 5,344 SF

**Pad Site**  
±0.87 Ac

APPLE ANNIE'S  
6,500 SF

AT LEASE

ARVADA PLACE

Alliance Ln



Hammonds Mill Rd



# Spring Mills Towne Center North

Hammonds Mill Road, Martinsburg, WV 25404

## Overview

Three retail bays in a multi-tenant building under construction at the interchange of I-81 and Hammonds Mill Road in north Martinsburg, WV. The site is situated directly across from Walmart in a fast-growing trade area. Delivery will occur in Q3 of 2024. In addition, retail pad sites are available from .87-3.44 acres with pylon signage on Hammonds Mill opposite the Walmart entrance.

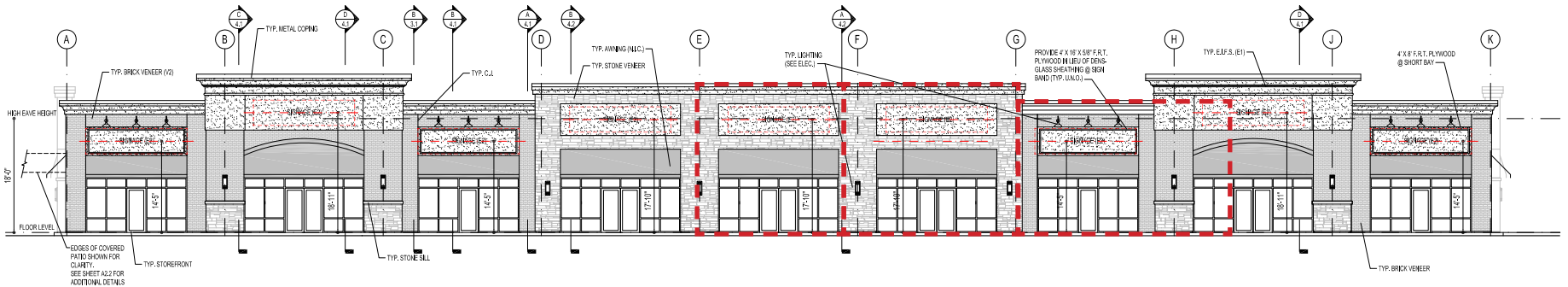
## Quick Facts

- Availability** Q3 2024
- Size** 1,500 - 5,344 square feet; Up to ±3.44 Ac pad sites
- Rental Rate** \$30.00 per square foot
- Net Charges** \$2.75 per square foot, NNN
- Nearby Tenants** Dollar Tree, Advance Auto, Sheetz, Taco Bell, Popeyes, Jersey Mike's, and McDonald's. Three County schools and two medical centers (Valley Health and WV University Medical System) are within a few blocks of the property.

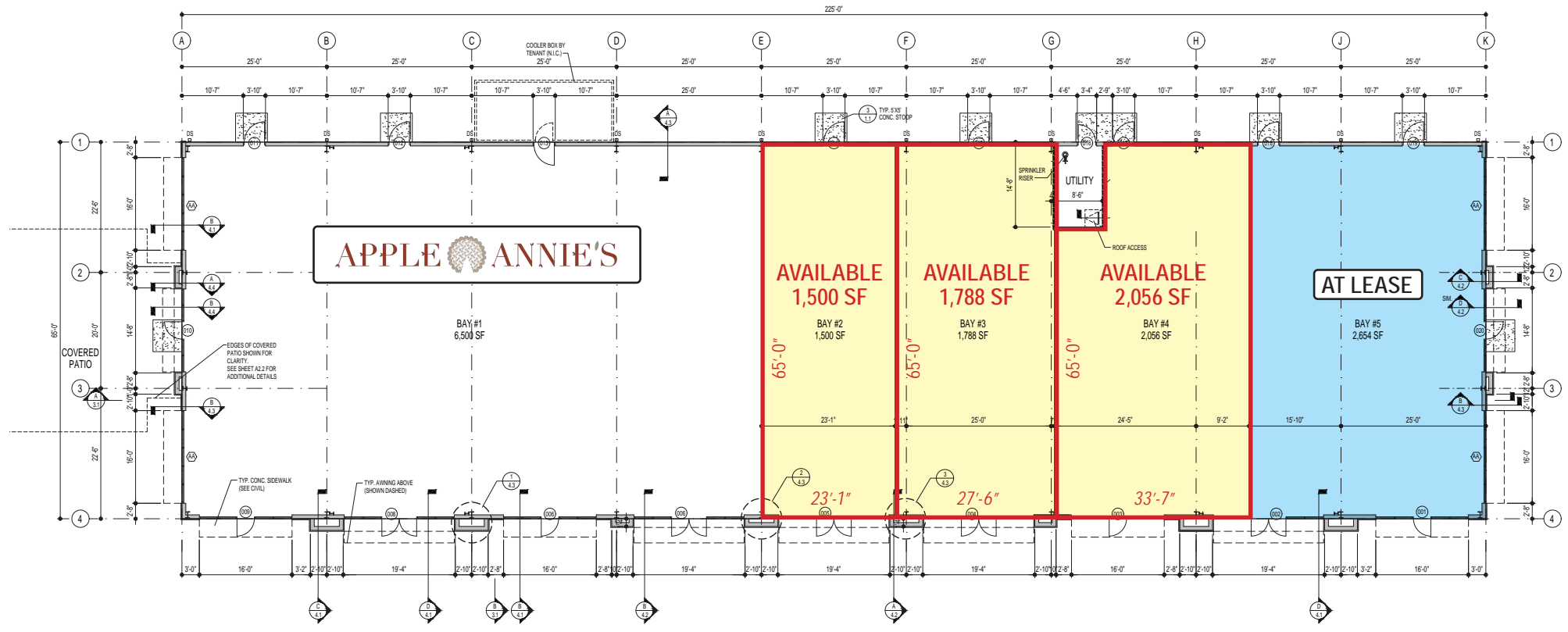
2023 Demographics	3 miles	5 miles	7 miles
POPULATION	16,782	40,174	70,766
HOUSEHOLDS	6,337	15,339	27,607
AVG. HH INCOME	\$108,831	\$100,351	\$91,688
DAYTIME POPULATION	12,065	28,045	56,200
TRAFFIC COUNT	11,200 AADT (Hammonds Mill Road)	41,300 AADT (I-81)	





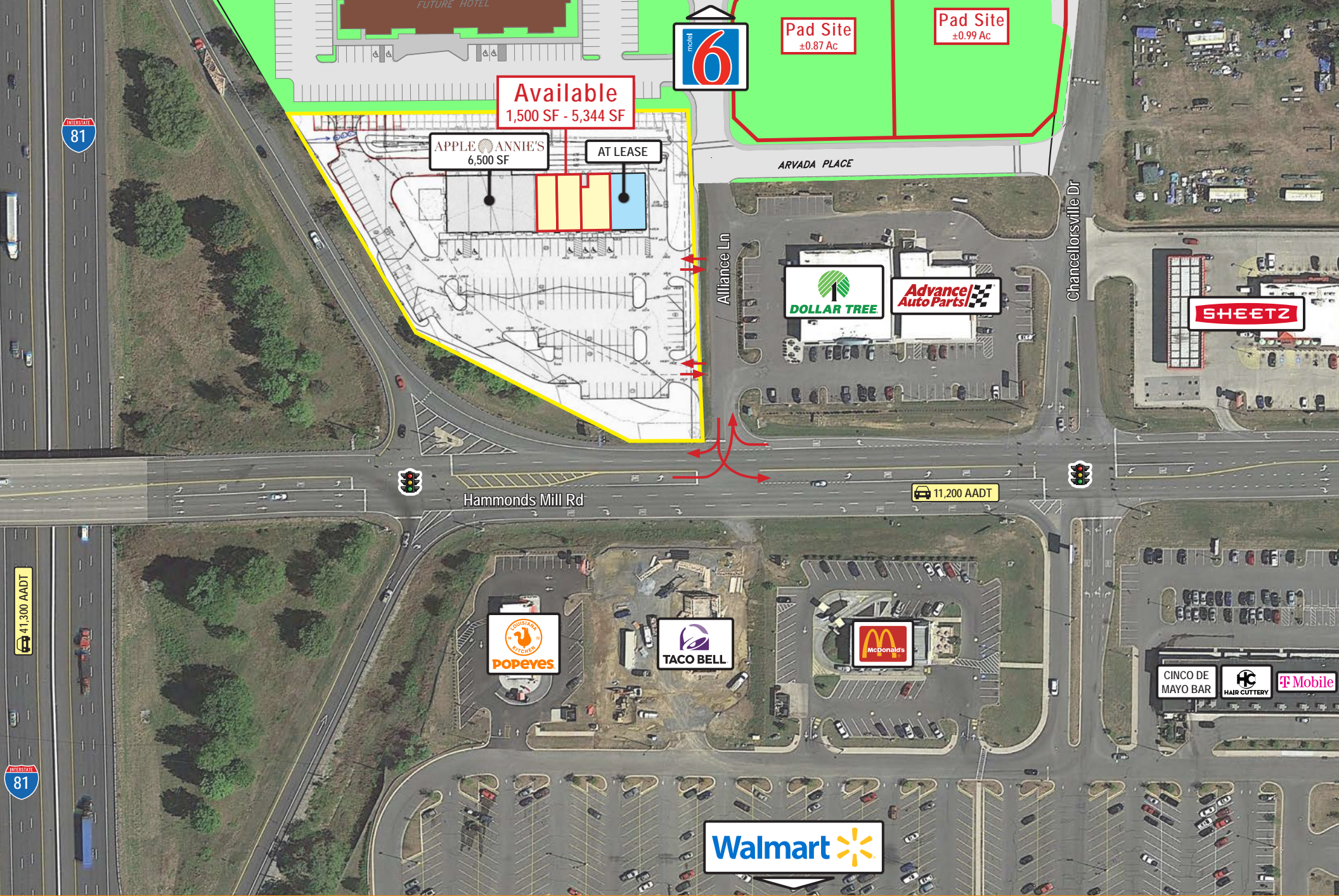


1 SOUTH ELEVATION  
2.1 1/8" = 1'-0"



1 FLOOR PLAN  
1.1 1/8" = 1'-0"

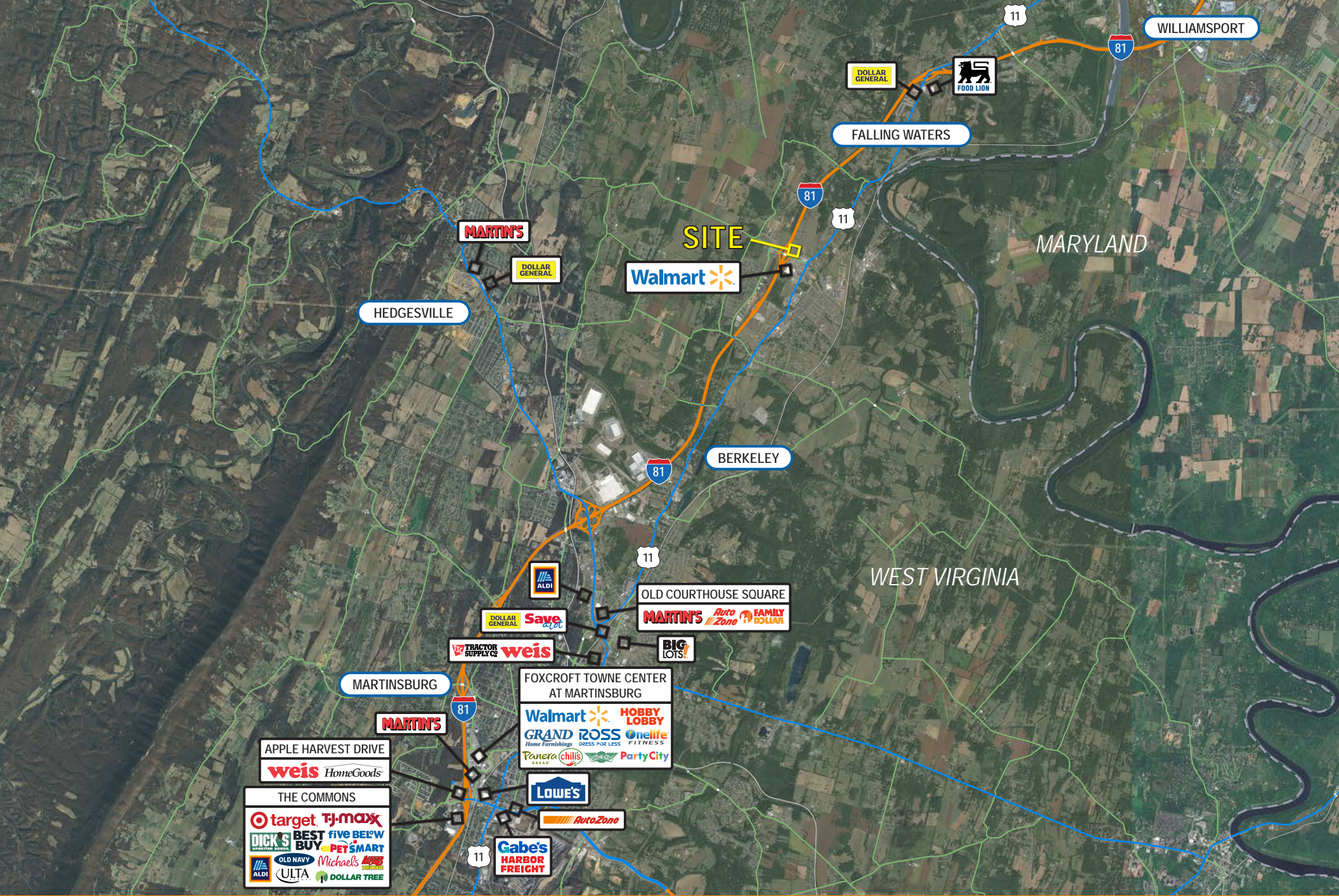
















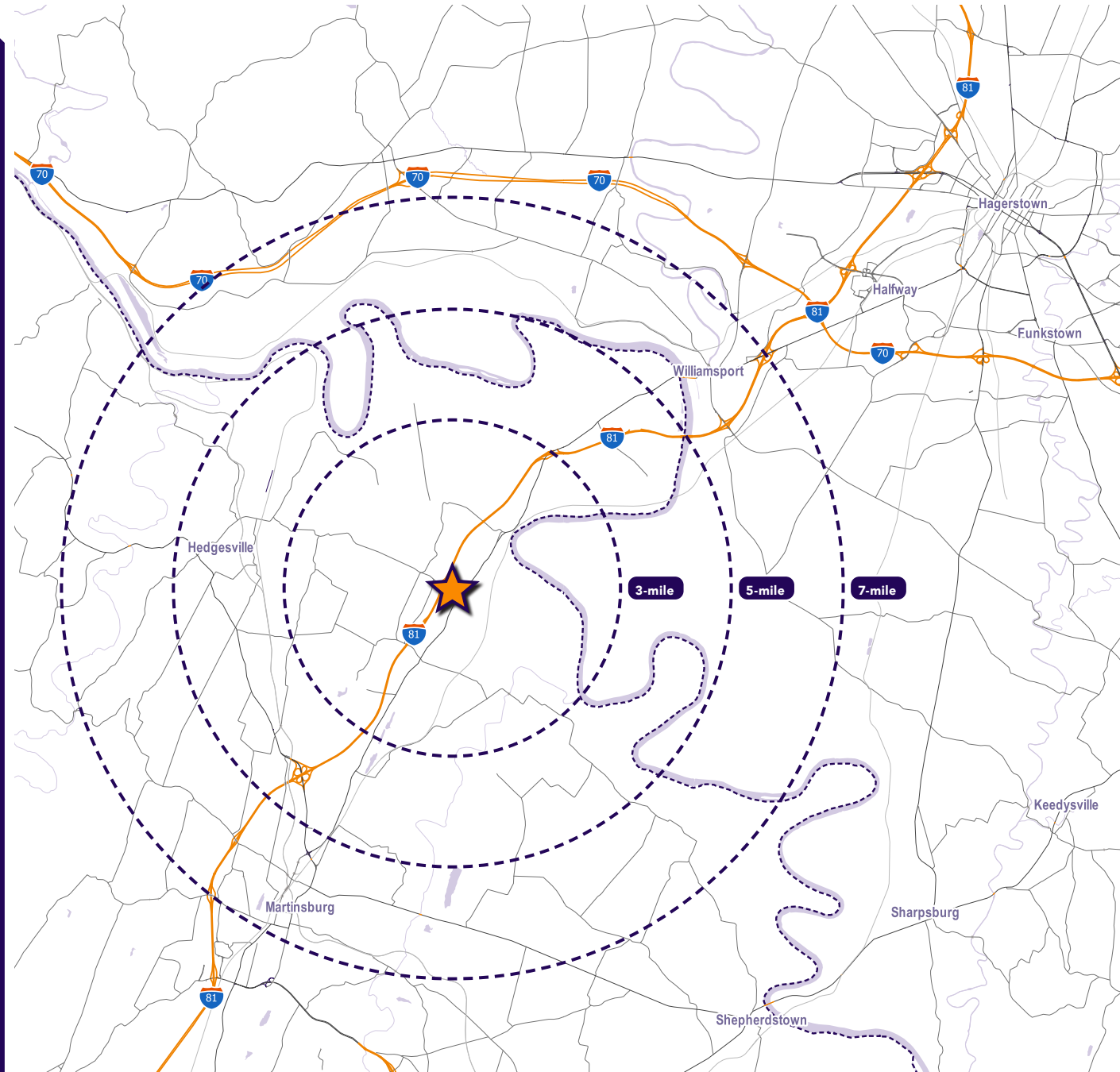
# Interested? Contact:

**Andrew Segall**

 asegall@segallgroup.com

 410.753.3947

 410.960.0361



## Maryland

605 South Eden Street  
Suite 200  
Baltimore, MD 21231  
410.753.3000

## DC • Northern VA

8245 Boone Boulevard  
Suite 800  
Tysons, VA 22182  
202.833.3830

## Richmond

4870 Sadler Road  
Suite 300  
Glen Allen, VA 23060  
804.336.2501

## West Virginia

126 East Burke Street  
Mail 11  
Martinsburg, WV 25401  
410.753.3000

## Online

[www.segallgroup.com](http://www.segallgroup.com)

Member of

 REALTY  
RESOURCES

**RETAIL  
READY.**

**segall**  
GROUP