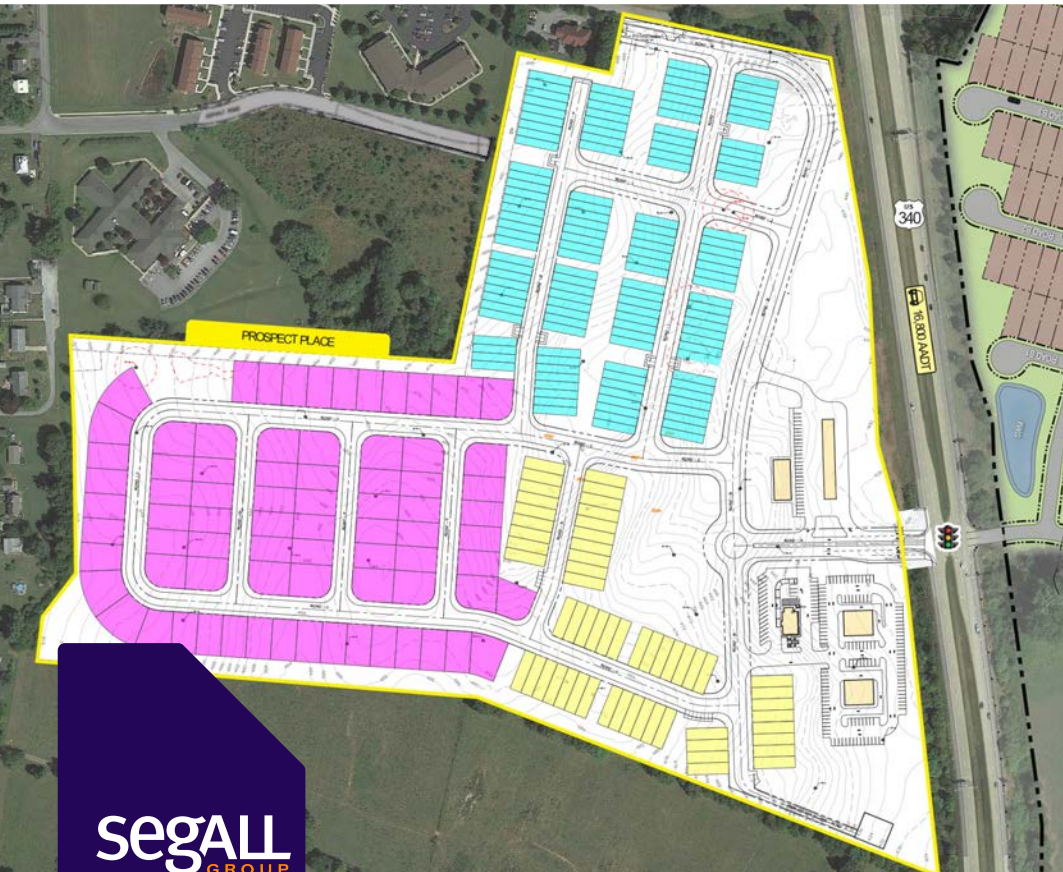


FOR LEASE Available 2024



Prospect Place






US-340 S, Charles Town, WV 25414

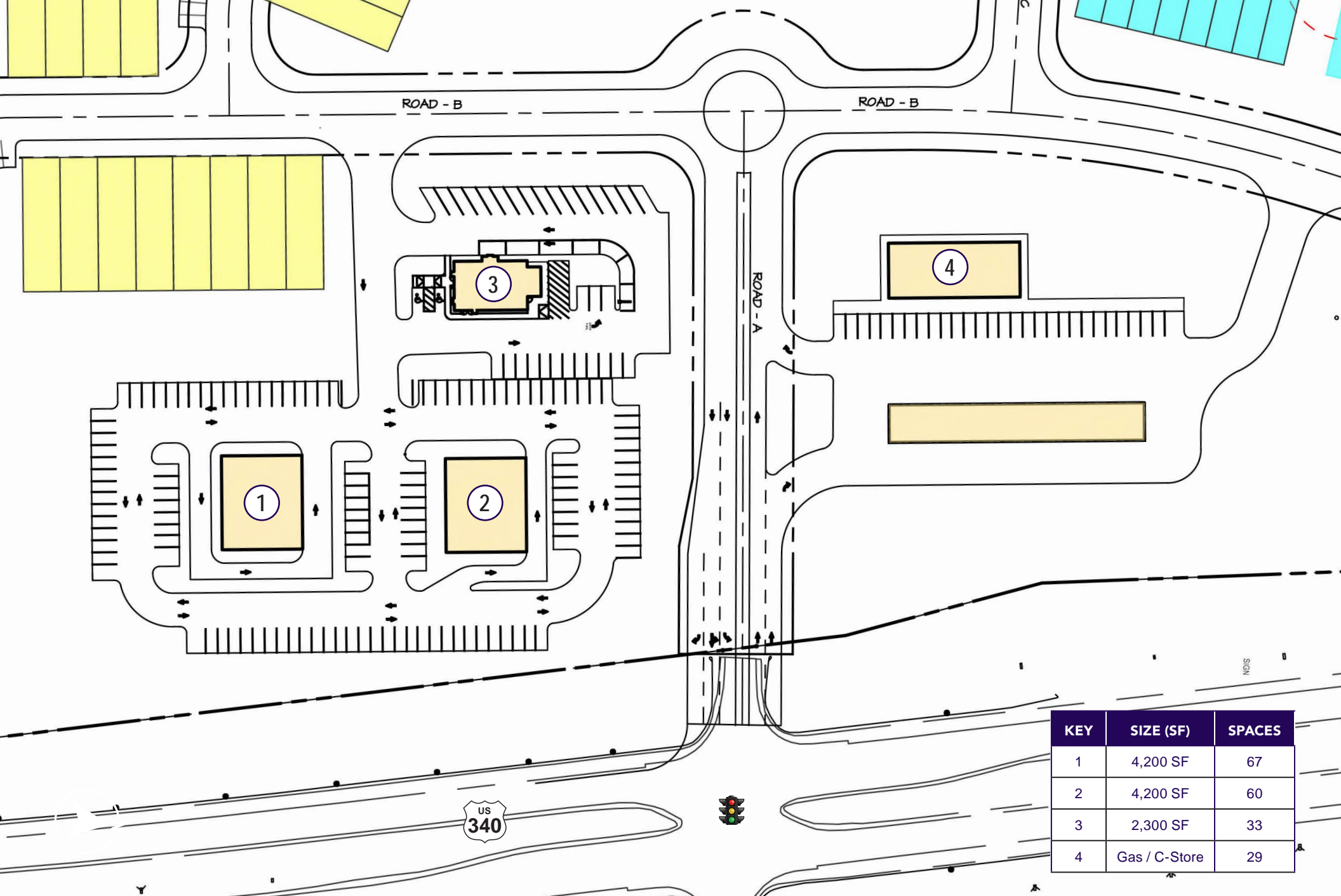
Overview

Proposed pad sites with signalized access in the booming Charles Town/Ranson market. The property is located on the west side of WV 9/US 340 approximately one mile south of WV 51 and the Charles Town Races & Slots complex. Overall development will include approximately 200 residential units (combination single family/villas) across from the Fritts Farm development (Lennar), which will consist of 232 single family homes and 50 duplex units.

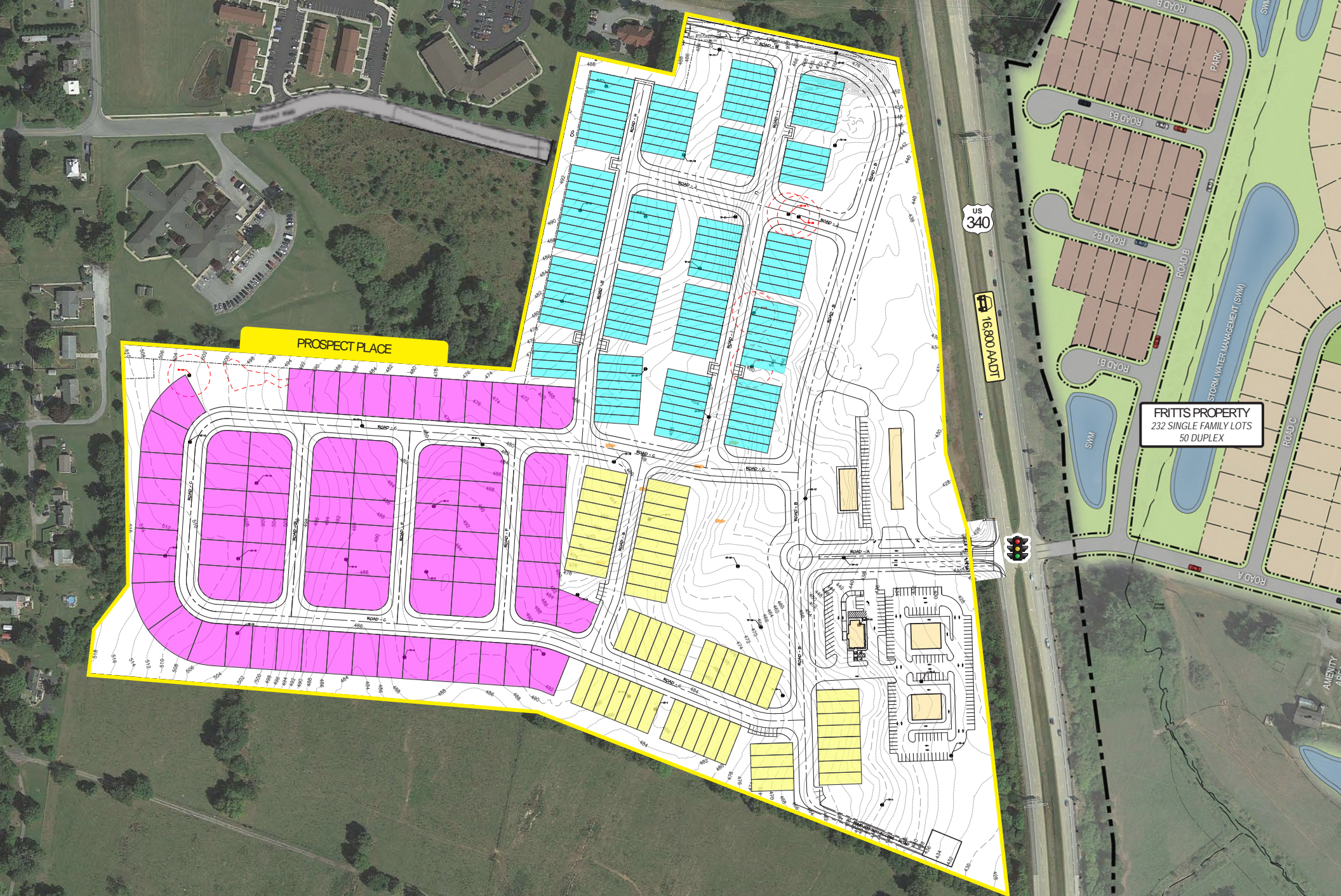
Quick Facts

Availability	2024
Size	2,300 - 5,000 square feet
Rental Rate/Sale Price	TBD

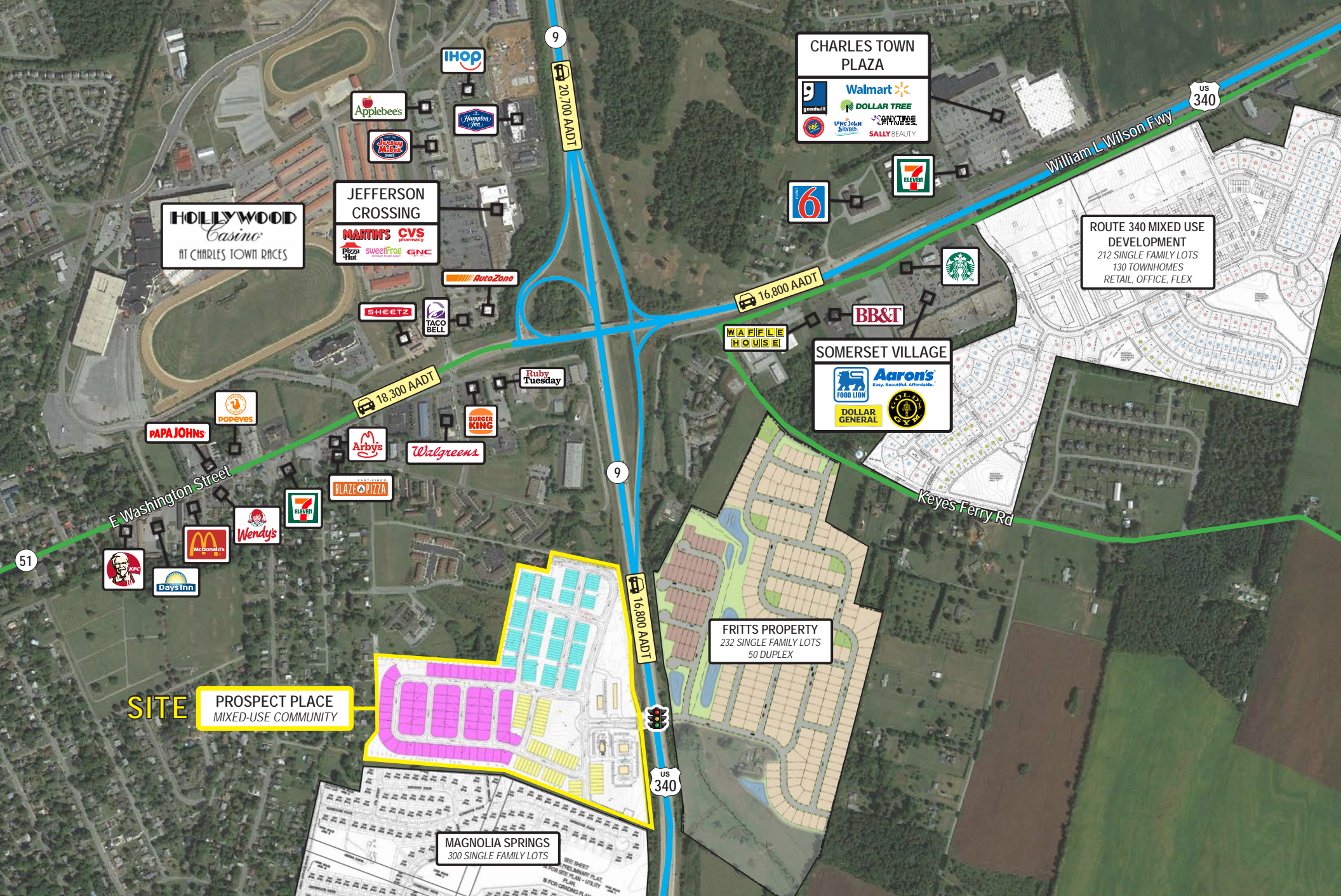
2023 Demographics	3 miles	5 miles	7 miles
 POPULATION	22,019	36,126	47,992
 HOUSEHOLDS	8,546	13,779	18,294
 AVG. HH INCOME	\$99,537	\$110,206	\$111,633
 DAYTIME POPULATION	49,379	60,196	69,476
 TRAFFIC COUNT	16,800 AADT (Veterans Memorial Hwy)	18,300 AADT (E Washington St)	

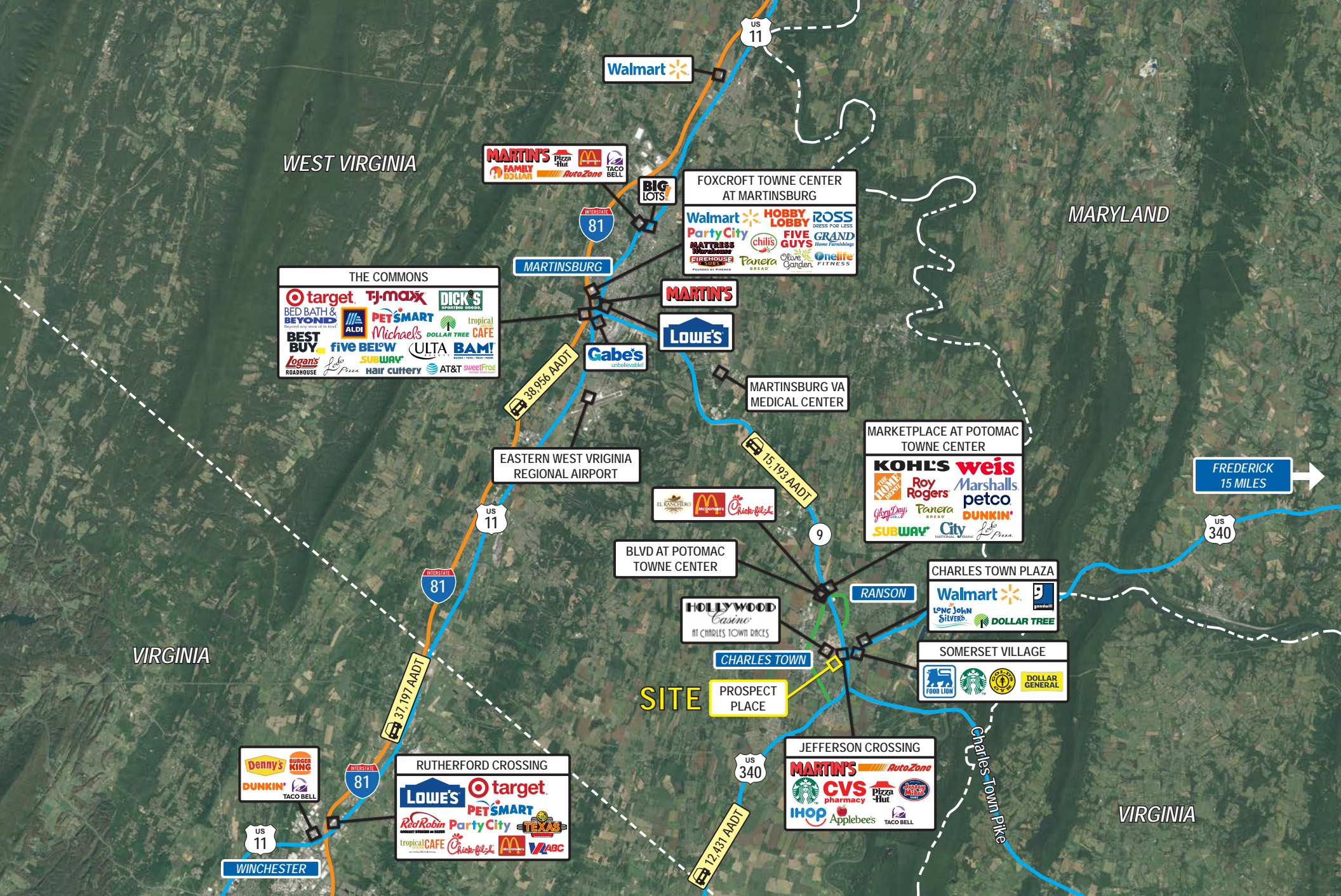


KEY	SIZE (SF)	SPACES
1	4,200 SF	67
2	4,200 SF	60
3	2,300 SF	33
4	Gas / C-Store	29



FRITTS PROPERTY
232 SINGLE FAMILY LOTS
50 DUPLEX







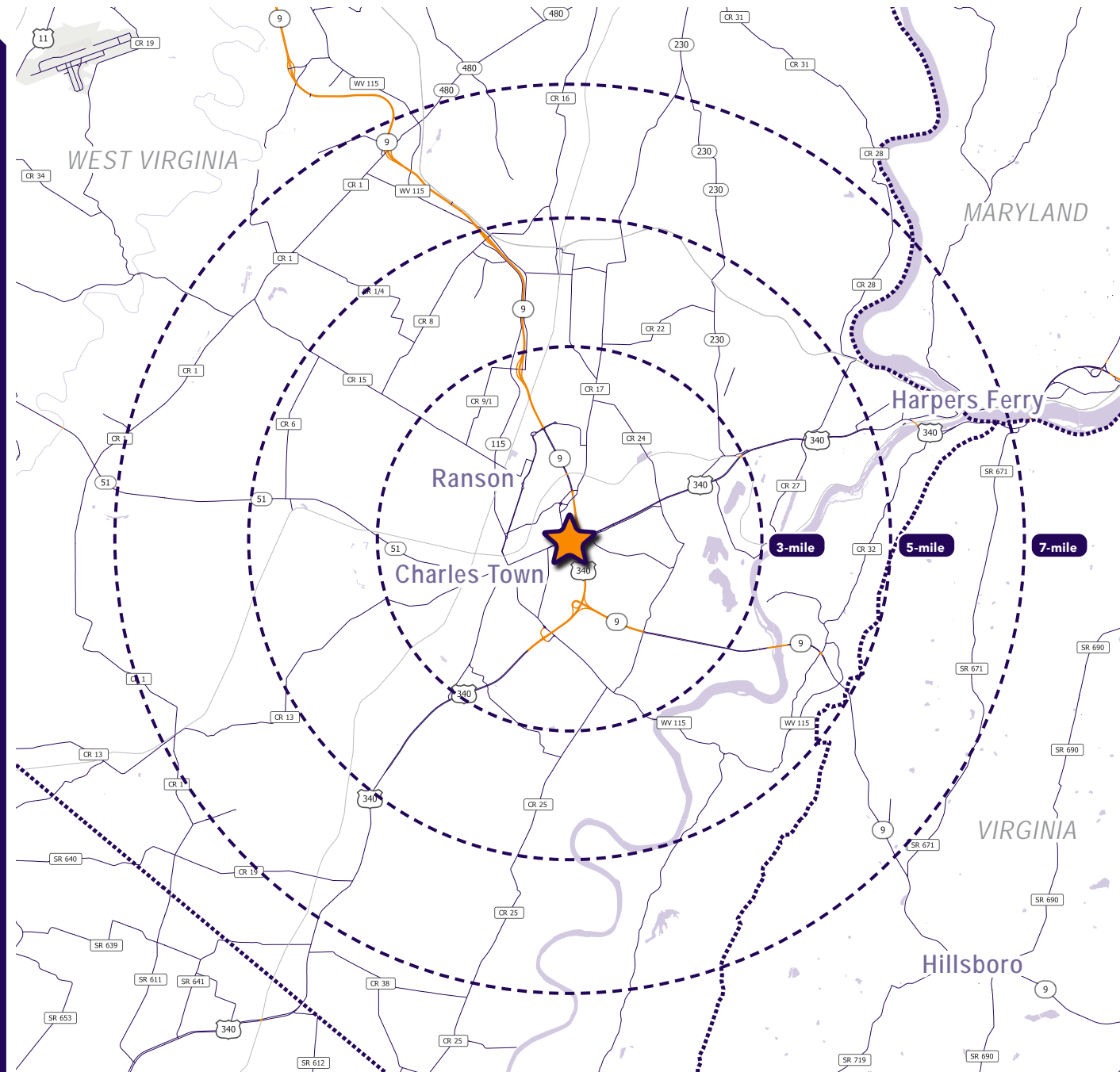
Interested? Contact:

Andrew Segall

 asegall@segallgroup.com

 410.753.3947

 410.960.0361



Maryland

605 South Eden Street
Suite 200
Baltimore, MD 21231
410.753.3000

DC • Northern VA

8245 Boone Boulevard
Suite 800
Tysons, VA 22182
202.833.3830

Richmond

4870 Sadler Road
Suite 300
Glen Allen, VA 23060
804.336.2501

West Virginia

126 East Burke Street
Mail 11
Martinsburg, WV 25401
410.753.3000

Online

www.segallgroup.com

Member of





**RETAIL
READY.**