

FOR LEASE Available Immediately

4250 John Marr Drive

Annandale, VA 22003

Overview

Centrally located in the main retail corridor, this former bank branch is available for sale. The one-story building with drive-thru is 2,444 square feet on .459 acres. The site features great visibility and cross access with Wells Fargo to get to Tom Davis Drive.

Quick Facts

Availability Immediate

Size 2,444 square foot building on .459 acres

Nearby Tenants



2022 Demographics

1 mile

3 miles

5 miles



POPULATION

20,072

132,592

448,208



HOUSEHOLDS

6,822

46,162

174,115



AVG. HH
INCOME

\$129,941

\$140,626

\$142,341



DAYTIME
POPULATION

22,871

203,988

513,579



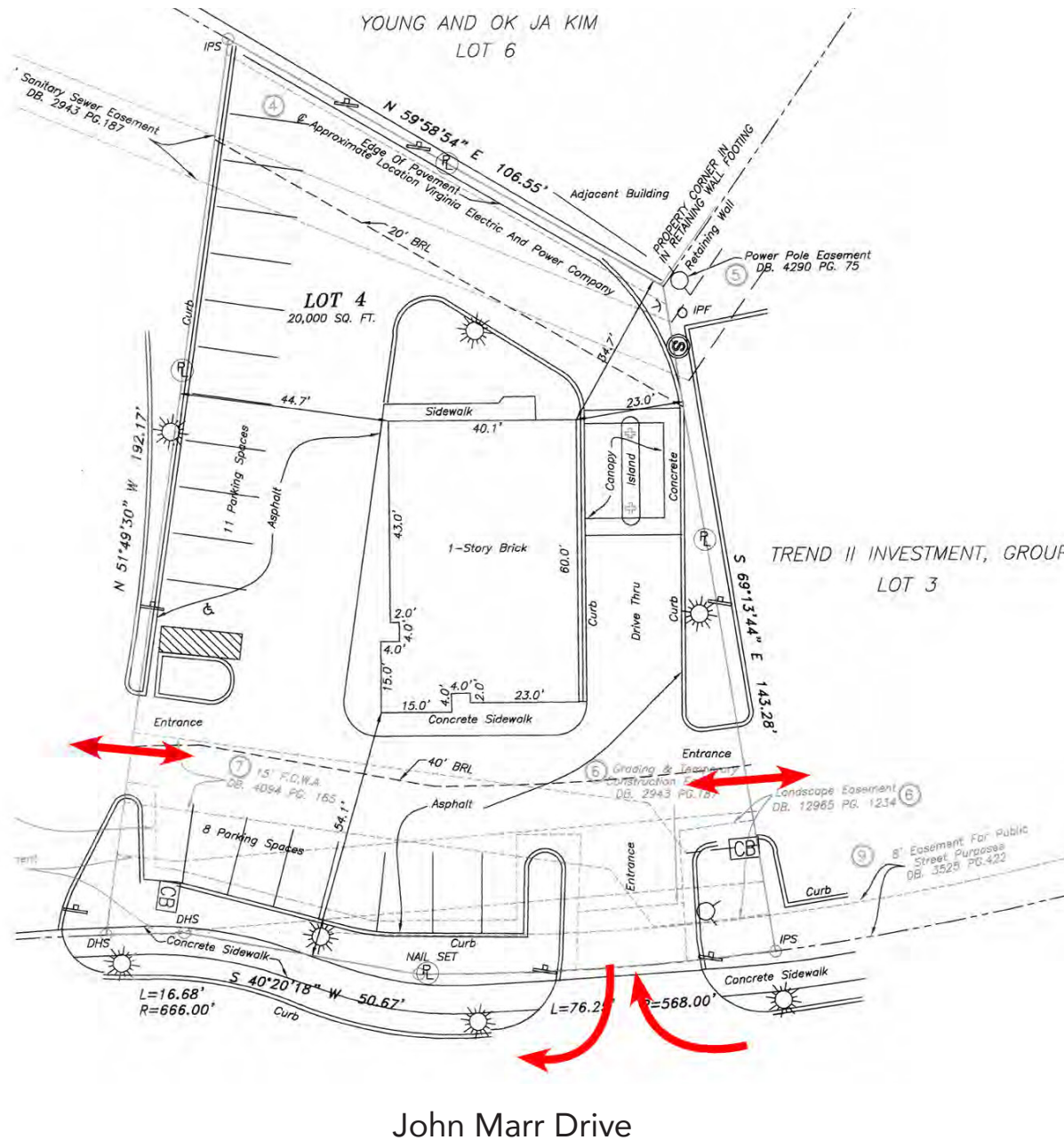
TRAFFIC COUNT

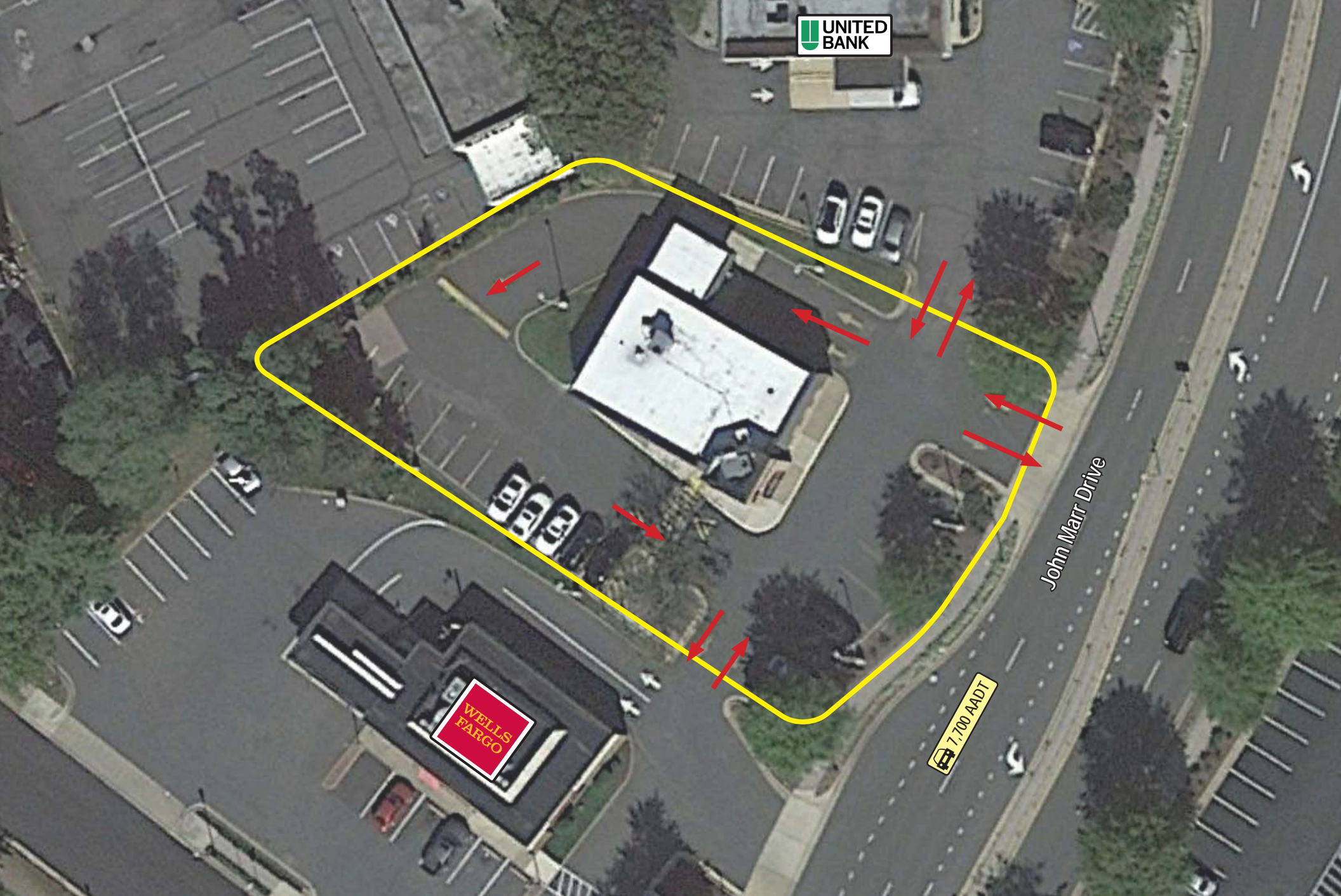
7,700 AADT
(John Marr Drive)

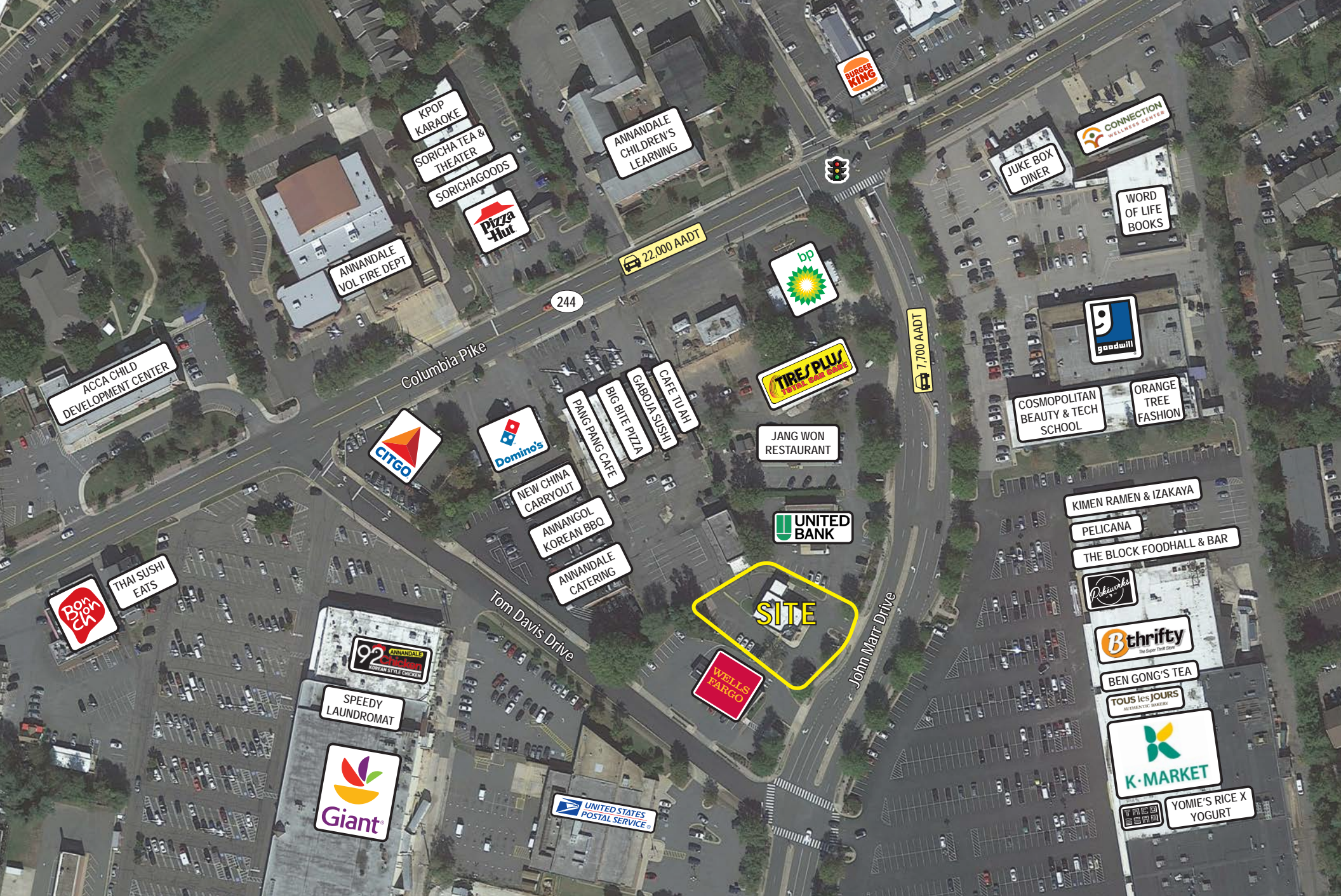
42,000 AADT
(Little River Turnpike)

segall
GROUP

COMMERCIAL REAL ESTATE









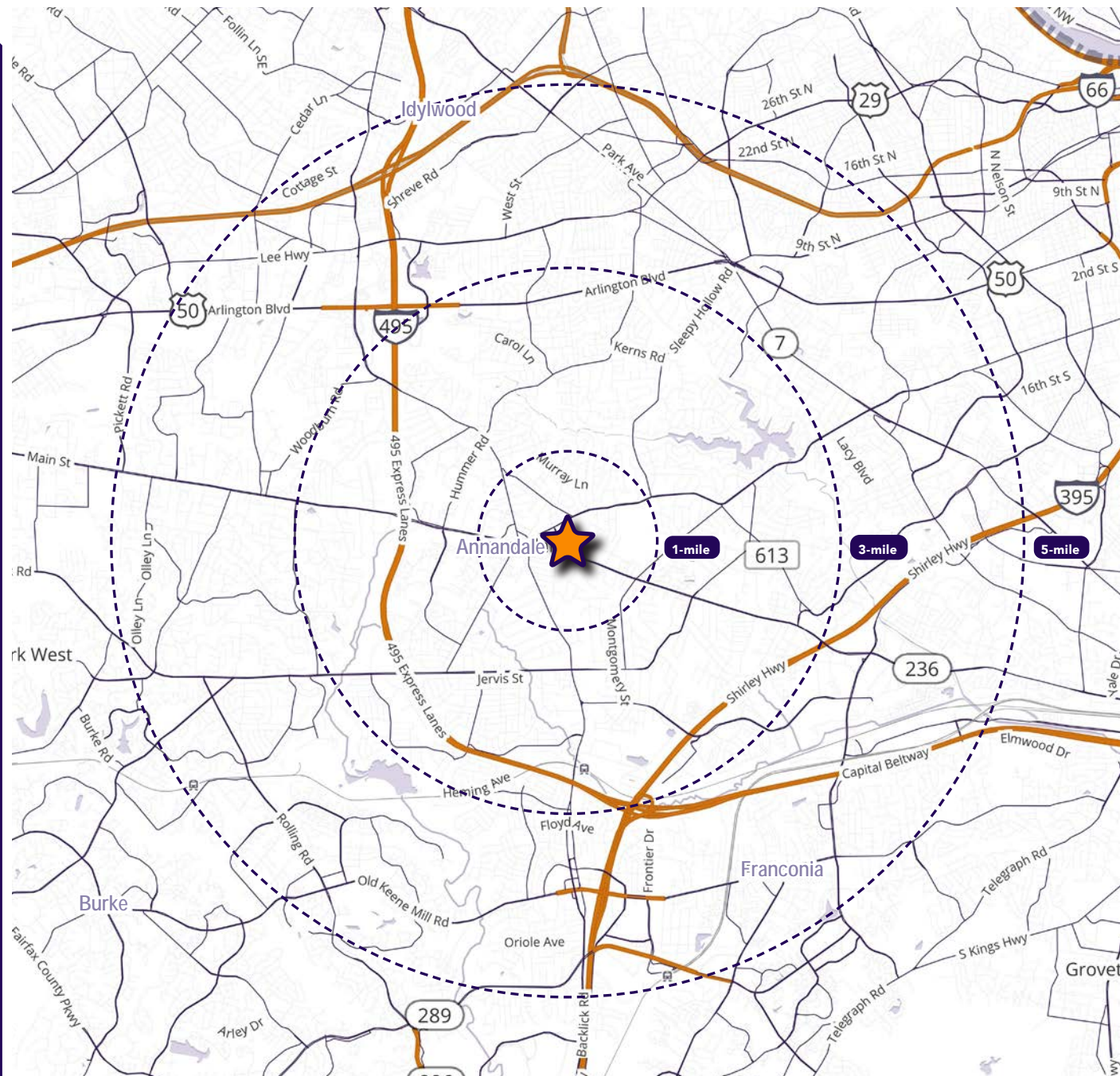
Interested? Contact:

Andrew Lynch

✉ alynch@segallgroup.com

☎ 202.466.2713

📞 508.505.7792



segall
GROUP

Maryland

605 South Eden Street
Suite 200
Baltimore, MD 21231
410.753.3000

DC • Northern VA

8245 Boone Boulevard
Suite 800
Tysons, VA 22182
202.833.3830

Richmond

2400 Old Brick Road
Suite 54
Glen Allen, VA 23060
804.336.2501

Online

www.segallgroup.com

Member of
REALTY
RESOURCES

RETAIL
READY.