

FOR LEASE / SALE Available Immediately

7623 S. Osborne Road






Upper Marlboro, MD 20772

Overview

Available freestanding building for sale / lease located just off the signalized intersection of Crain Highway (US 301) and S. Osborne Road in Upper Marlboro, MD. Located across from Osborne Shopping Center (Safeway), the property offers multiple access points and excellent visibility with pylon signage. Landlord will consider re-use of the existing building as well as redevelopment opportunities.

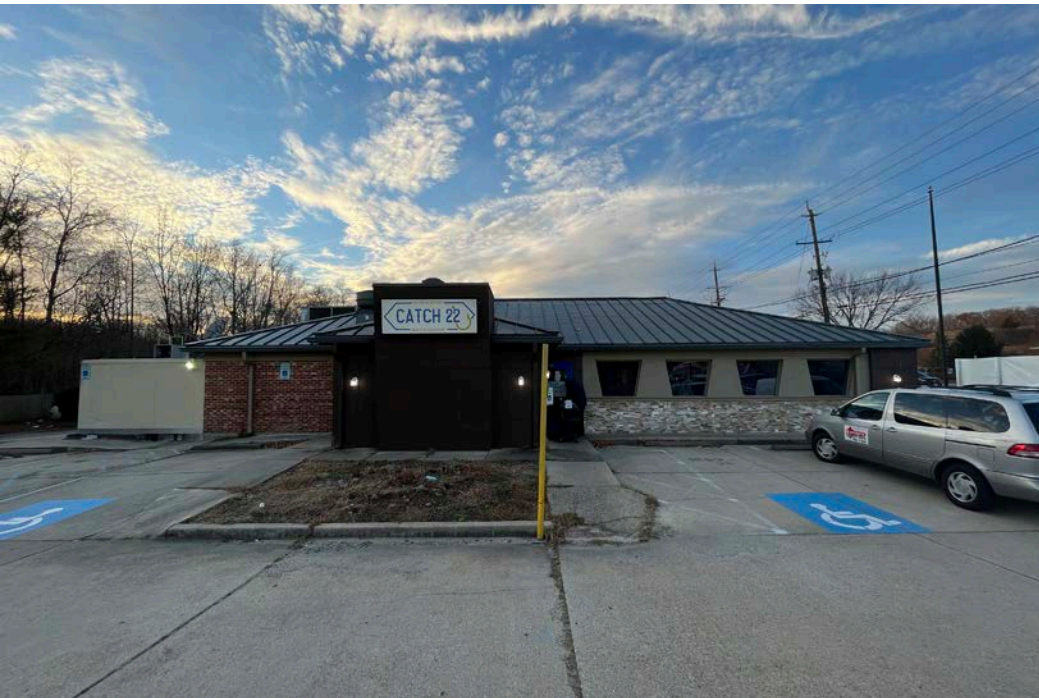
Quick Facts

Size	2,750 square feet
Availability	Immediate
Land Size	0.7 acres
Parking	44 spaces
Zoning	C-S-C
RE Taxes	\$10,754.60 (2022)

2020 Demographics	1 miles	3 miles	5 miles
 POPULATION	3,008	30,997	60,684
 HOUSEHOLDS	1,145	10,715	21,758
 AVG. HH INCOME	\$108,728	\$128,896	\$128,403
 DAYTIME POPULATION	679	10,554	27,588
 TRAFFIC COUNTS	9,512 AADT (S. Osborne Road)	27,732 AADT (Crain Highway - US 301)	

segall
GROUP

COMMERCIAL REAL ESTATE







Interested? Contact:

Andrew Segall

✉ asegall@segallgroup.com

☎ 410.753.3947

📱 410.960.0361

Marcelo Grosberg

✉ mgrosberg@segallgroup.com

☎ 410.753.3948

📱 443.927.6100



Maryland

605 South Eden Street, Ste 200
Baltimore, MD 21231
410.753.3000

DC • Virginia

7900 Westpark Drive, Ste 560
McLean, VA 22102
202.833.3830

Online

www.segallgroup.com

Member of
REALTY
RESOURCES

segALL
GROUP

RETAIL
READY.