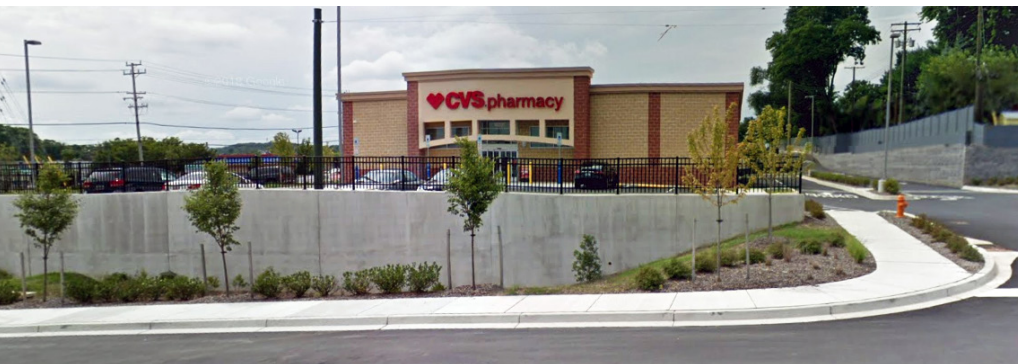


FOR LEASE Available Immediately



Painters Mill Place

Reisterstown Road, Owings Mills, MD 21117

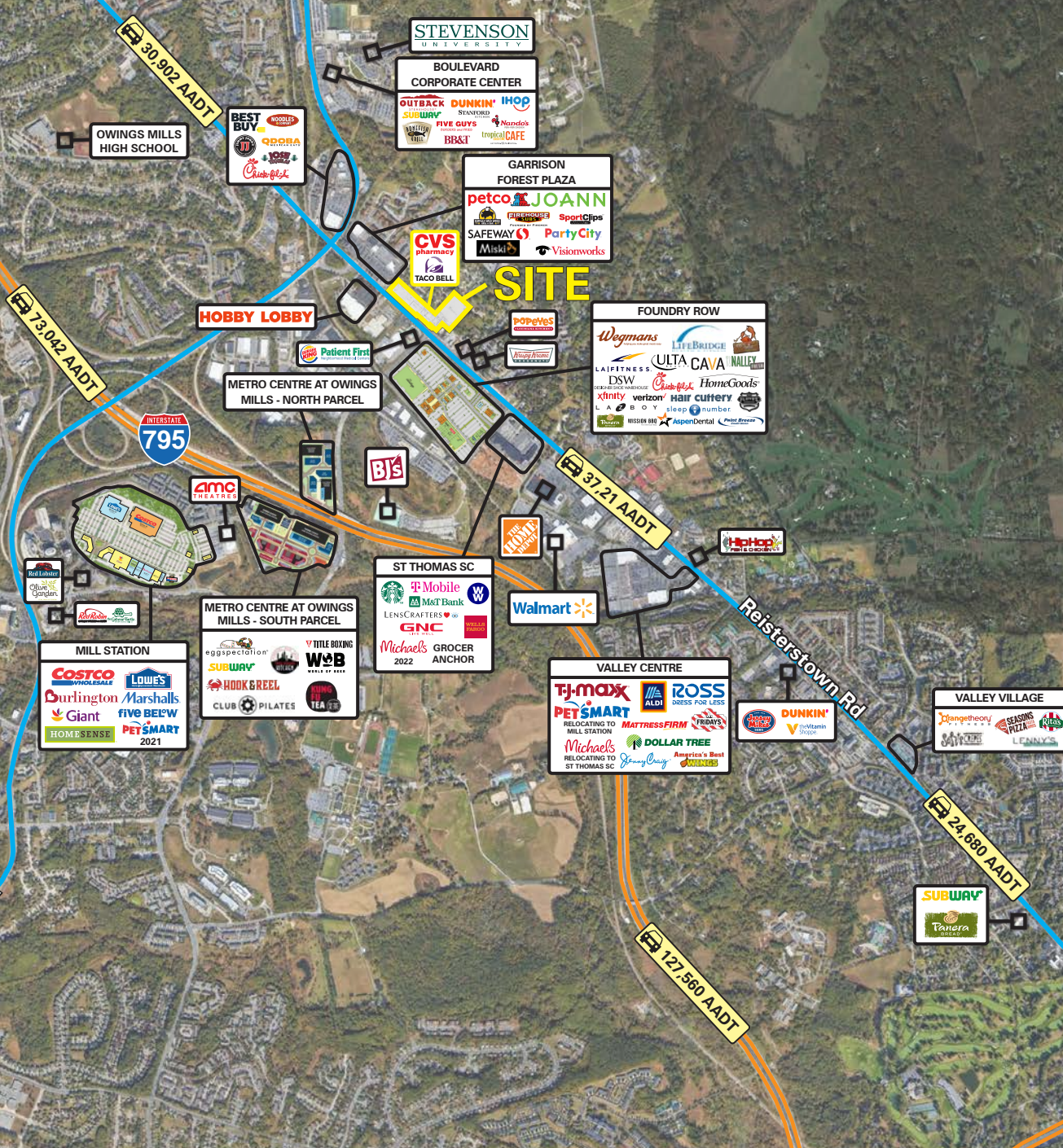
Overview

One remaining pad site or 6,500 square foot build-to-suit strip center opportunity on busy Reisterstown Road (MD 140). Painters Mill Place is situated between two traffic signals and diagonally opposite Wegman's-anchored Foundry Row.

Quick Facts

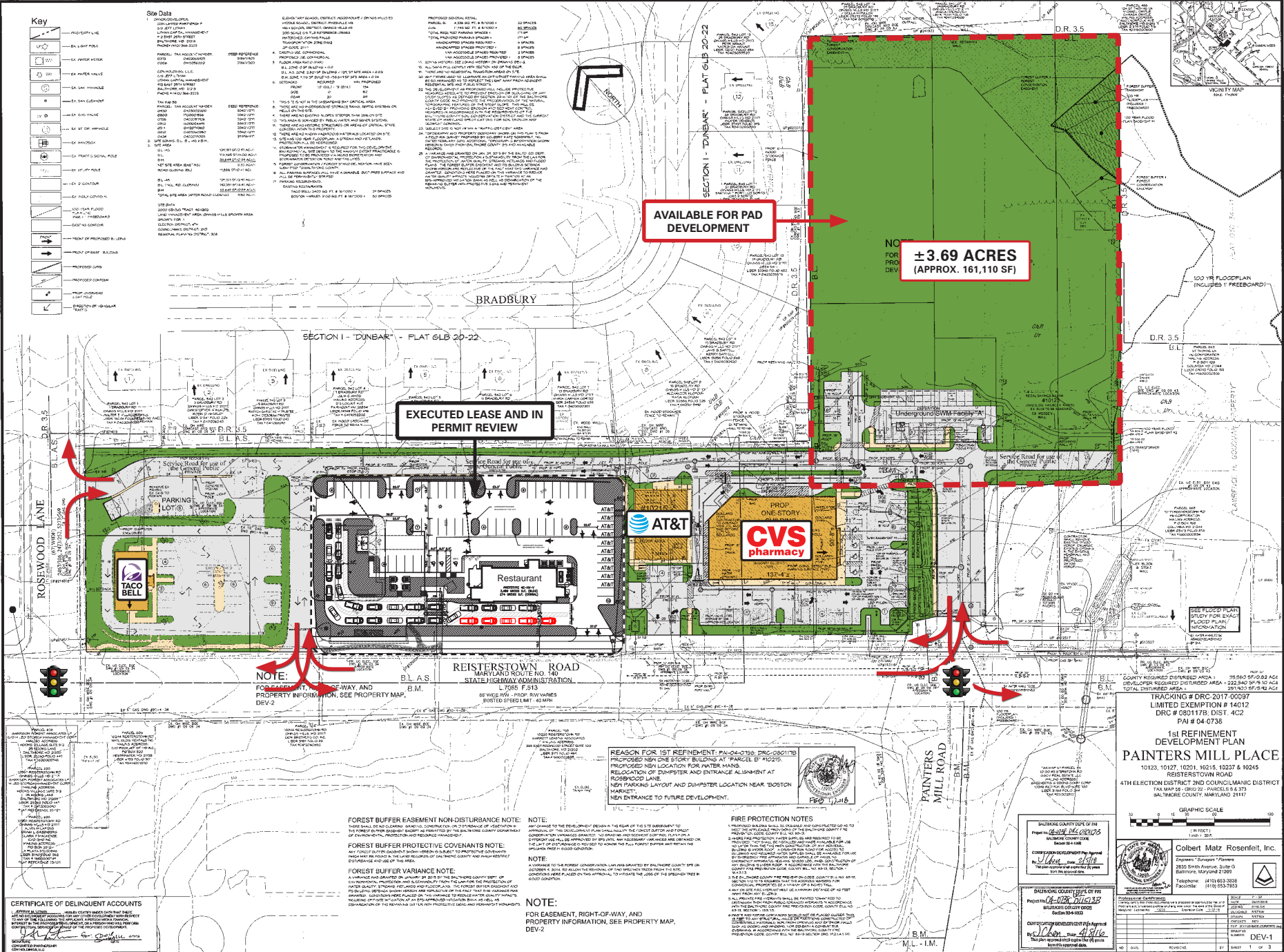
Opportunity	Pad Site; 6,500 square feet strip center
Rental Rate	Negotiable
Net Charges	Projected at \$7.00 per square foot (In Review)
Traffic Counts	37,921 AADT (Reisterstown Road) 23,560 AADT (Painters Mill Road)





2020 Demographics	1 mile	3 miles	5 miles
POPULATION	7,051	74,881	166,485
HOUSEHOLDS	2,454	30,113	65,737
AVG. HH INCOME	\$69,417	\$110,504	\$112,689
DAYTIME POPULATION	12,577	73,600	154,805
TRAFFIC COUNTS	37,921 AADT (Reisterstown Road)		

2020 Drive Time	5 minutes
POPULATION	20,575
EDUCATION	90% High School or Greater
AVG. HH INCOME	\$84,603
DAYTIME POPULATION	25,893
MILLENNIALS (Ages 15-39)	51.4% (Born 1980 - mid 2000's)



1st REFINEMENT
DEVELOPMENT PLAN
PAINTERS MILL PLACE
10123, 10127, 10201, 10215, 10237 & 10245
REISTERSTOWN ROAD
4TH ELECTION DISTRICT 2ND COUNCILMANIC DISTRICT
TAX MAP 58 - 0302 - 22 - PARCELS 6 & 7
BALTIMORE COUNTY, MARYLAND 21117

GRAPHIC SCALE
1" = 100'
1" = 100'

Colbert Matz Rosefield, Inc.
Engineers / Surveyors / Planners
2635 Smith Avenue, Suite G
Baltimore, Maryland 21209
Telephone: (410) 653-3338
Facsimile: (410) 653-7853

Professional Engineer
No. 10123, 10127, 10201, 10215, 10237 & 10245
Professional Engineer
No. 10123, 10127, 10201, 10215, 10237 & 10245

DEV-1

Interested? Contact:

Jamie Lanham

✉ janham@segallgroup.com

☎ 804.336.2501

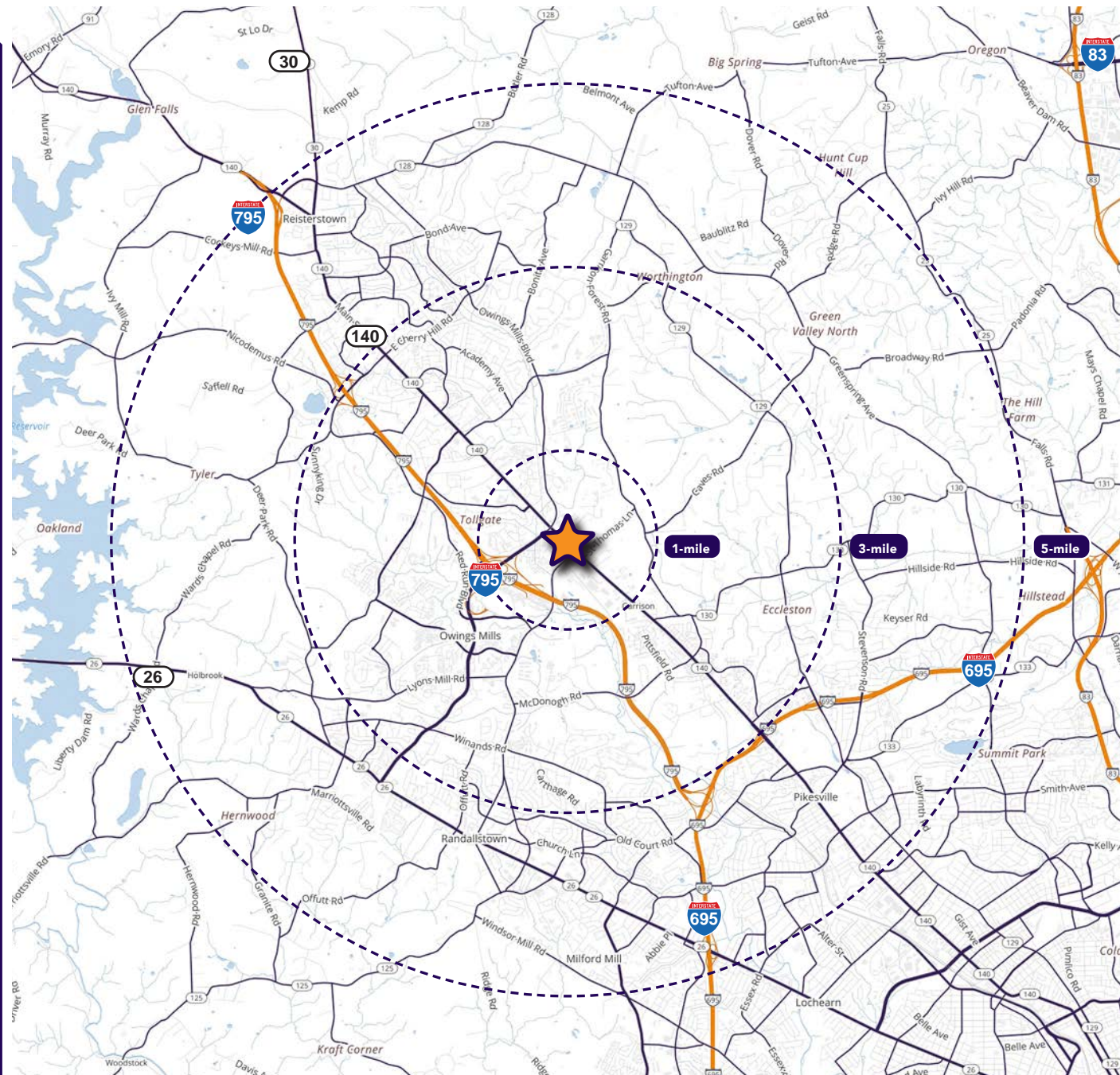
📞 410.336.0138

Marcelo Grosberg

✉ mgrosberg@segallgroup.com

☎ 410.753.3948

📞 443.927.6100



Maryland

605 South Eden Street, Ste 200
Baltimore, MD 21231
410.753.3000

DC • Virginia

7900 Westpark Drive, Ste 560
McLean, VA 22102
202.833.3830

Online

www.segallgroup.com

Member of
**REALTY
RESOURCES**

segall
GROUP