



RETAIL SPACE FOR LEASE

Northwood Commons
1500 HAVENWOOD ROAD
BALTIMORE, MD 21218



All information herein was obtained from sources deemed reliable.
 This information is subject to change. No warranty is made as to its accuracy.



OVERVIEW

- Northwood Commons is the transformative redevelopment of the Northwood Plaza Shopping Center, located in Northeast Baltimore City.
- Directly adjacent to Morgan State University (8,000 students), which has invested more than \$160 million on its Northwood Campus.
- New development will feature 100,000 SF of new retail and services.
- Project will serve the densely populated Hillen, Original Northwood and New Northwood communities.

FEATURING

DELIVERY	1st Quarter of 2019
RENTAL RATE	Negotiable
SIGNAGE	Pylon Signage Available
CO-TENANTS	Rite Aid, McDonald's & Morgan State University Bookstore (10,000 SF)
TRAFFIC COUNTS	25,640 AADT (Hillen Road) 22,885 AADT (Loch Raven Boulevard)

DEMOGRAPHICS AT A GLANCE

2016 DEMOGRAPHICS	.5 MILE	1 MILE	1.5 MILES
Population	7,774	29,300	65,057
No. Households	2,321	10,784	25,190
Average HH Income	\$62,152	\$56,467	\$61,341
Daytime Population	1,988	4,530	14,108

FOR MORE INFORMATION, CONTACT:

Andrew G. Segall
 asegall@segallgroup.com
 410.960.0361 **CELL**
 410.753.3000 **OFFICE**

Jonathan Garritt
 jgarritt@segallgroup.com
 443.223.0662 **CELL**
 410.753.3000 **OFFICE**

SEGALL GROUP COMMERCIAL REAL ESTATE

410.753.3000 **OFFICE**
 605 South Eden Street
 Suite 200
 Baltimore, MD 21231

202.833.3830 **OFFICE**
 1600 Wilson Boulevard
 Suite 930
 Arlington, VA 22209

segallgroup.com • RETAIL ORIENTEDSM

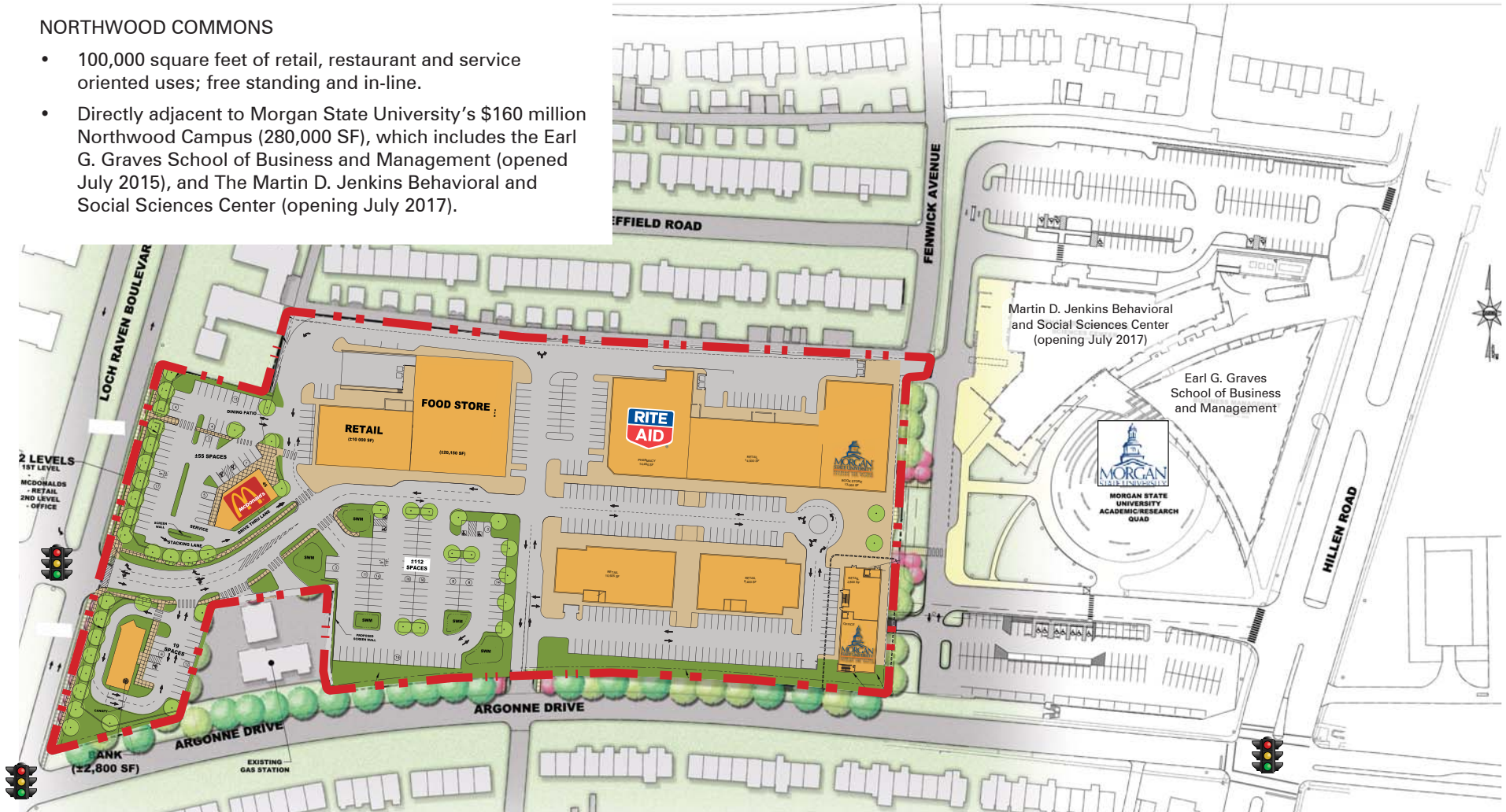
Members of the International Council of Shopping Centers and Realty Resources.

SITE PLAN Northwood Commons • 1500 Havenwood Road • Baltimore, MD 21218

RETAIL SPACE FOR LEASE

NORTHWOOD COMMONS

- 100,000 square feet of retail, restaurant and service oriented uses; free standing and in-line.
- Directly adjacent to Morgan State University's \$160 million Northwood Campus (280,000 SF), which includes the Earl G. Graves School of Business and Management (opened July 2015), and The Martin D. Jenkins Behavioral and Social Sciences Center (opening July 2017).



FOR MORE INFORMATION, CONTACT:

Andrew G. Segall
asegall@segallgroup.com
410.960.0361 **CELL**
410.753.3000 **OFFICE**

Jonathan Garritt
jgarritt@segallgroup.com
443.223.0662 **CELL**
410.753.3000 **OFFICE**

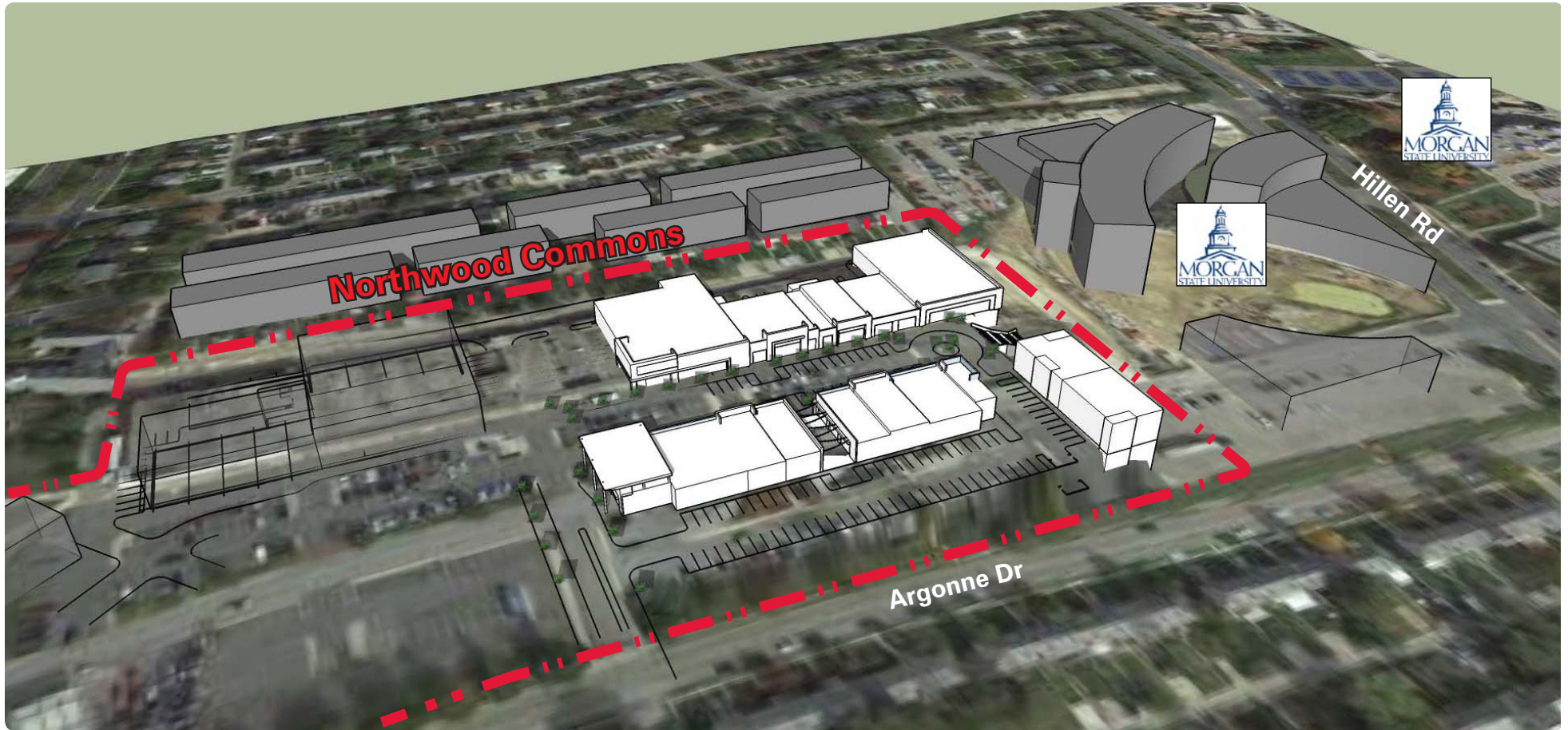
SEGALL GROUP COMMERCIAL REAL ESTATE

410.753.3000 **OFFICE**
605 South Eden Street
Suite 200
Baltimore, MD 21231

202.833.3830 **OFFICE**
1600 Wilson Boulevard
Suite 930
Arlington, VA 22209

segallgroup.com • RETAIL ORIENTEDSM

Members of the International Council of Shopping Centers and Realty Resources.



FOR MORE INFORMATION, CONTACT:

Andrew G. Segall
asegall@segallgroup.com
410.960.0361 **CELL**
410.753.3000 **OFFICE**

Jonathan Garritt
jgarritt@segallgroup.com
443.223.0662 **CELL**
410.753.3000 **OFFICE**

SEGALL GROUP COMMERCIAL REAL ESTATE

410.753.3000 **OFFICE**
605 South Eden Street
Suite 200
Baltimore, MD 21231

202.833.3830 **OFFICE**
1600 Wilson Boulevard
Suite 930
Arlington, VA 22209

segallgroup.com • RETAIL ORIENTEDSM

Members of the International Council of Shopping Centers and Realty Resources.

MORGAN STATE NORTHWOOD CAMPUS (adjacent to Northwood Commons)

RETAIL SPACE FOR LEASE

Martin D. Jenkins Behavioral and Social Sciences Building (opening July 2017) & Earl G. Graves School of Business and Management Building



FOR MORE INFORMATION, CONTACT:

Andrew G. Segall
asegall@segallgroup.com
410.960.0361 **CELL**
410.753.3000 **OFFICE**

Jonathan Garritt
jgarritt@segallgroup.com
443.223.0662 **CELL**
410.753.3000 **OFFICE**

SEGALL GROUP COMMERCIAL REAL ESTATE

410.753.3000 **OFFICE**
605 South Eden Street
Suite 200
Baltimore, MD 21231

202.833.3830 **OFFICE**
1600 Wilson Boulevard
Suite 930
Arlington, VA 22209

segallgroup.com • RETAIL ORIENTEDSM

Members of the International Council of Shopping Centers and Realty Resources.

ELEVATIONS

Northwood Commons • 1500 Havenwood Road • Baltimore, MD 21218

RETAIL SPACE FOR LEASE



Precedent Images



FOR MORE INFORMATION, CONTACT:

Andrew G. Segall
asegall@segallgroup.com
410.960.0361 **CELL**
410.753.3000 **OFFICE**

Jonathan Garritt
jgarritt@segallgroup.com
443.223.0662 **CELL**
410.753.3000 **OFFICE**

SEGALL GROUP COMMERCIAL REAL ESTATE

410.753.3000 **OFFICE**
605 South Eden Street
Suite 200
Baltimore, MD 21231

202.833.3830 **OFFICE**
1600 Wilson Boulevard
Suite 930
Arlington, VA 22209

segallgroup.com • RETAIL ORIENTEDSM

Members of the International Council of Shopping Centers and Realty Resources.

UNIVERSITY STORE Northwood Commons • 1500 Havenwood Road • Baltimore, MD 21218

RETAIL SPACE FOR LEASE



FOR MORE INFORMATION, CONTACT:

Andrew G. Segall
 asegall@segallgroup.com
 410.960.0361 **CELL**
 410.753.3000 **OFFICE**

Jonathan Garritt
 jgarritt@segallgroup.com
 443.223.0662 **CELL**
 410.753.3000 **OFFICE**

SEGALL GROUP COMMERCIAL REAL ESTATE

410.753.3000 **OFFICE**
 605 South Eden Street
 Suite 200
 Baltimore, MD 21231

202.833.3830 **OFFICE**
 1600 Wilson Boulevard
 Suite 930
 Arlington, VA 22209

segallgroup.com • RETAIL ORIENTEDSM

Members of the International Council of Shopping Centers and Realty Resources.



FOR MORE INFORMATION, CONTACT:

Andrew G. Segall
 asegall@segallgroup.com
 410.960.0361 **CELL**
 410.753.3000 **OFFICE**

Jonathan Garritt
 jgarritt@segallgroup.com
 443.223.0662 **CELL**
 410.753.3000 **OFFICE**

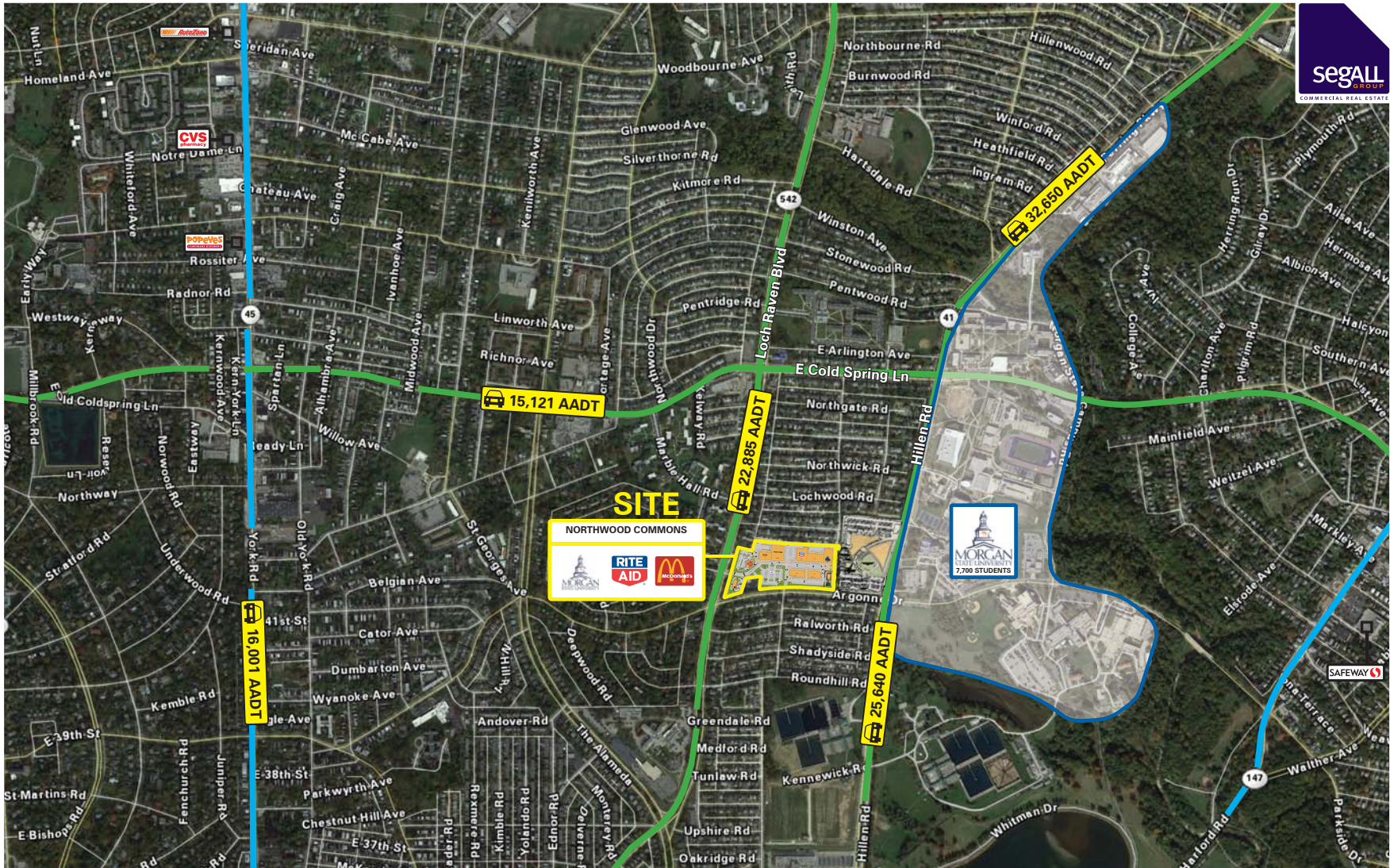
SEGALL GROUP COMMERCIAL REAL ESTATE

410.753.3000 **OFFICE**
 605 South Eden Street
 Suite 200
 Baltimore, MD 21231

202.833.3830 **OFFICE**
 1600 Wilson Boulevard
 Suite 930
 Arlington, VA 22209

segallgroup.com • **RETAIL ORIENTEDSM**

Members of the International Council of Shopping Centers and Realty Resources.



SITE
NORTHWOOD COMMONS



FOR MORE INFORMATION, CONTACT:

Andrew G. Segall asegall@segallgroup.com 410.960.0361 CELL 410.753.3000 OFFICE	Jonathan Garritt jgarritt@segallgroup.com 443.223.0662 CELL 410.753.3000 OFFICE
---	--

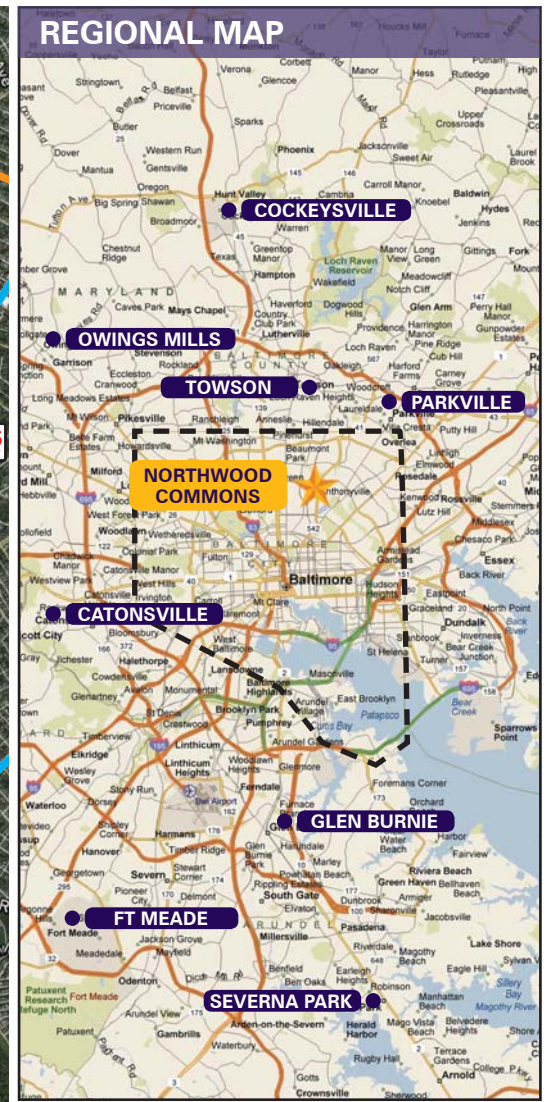
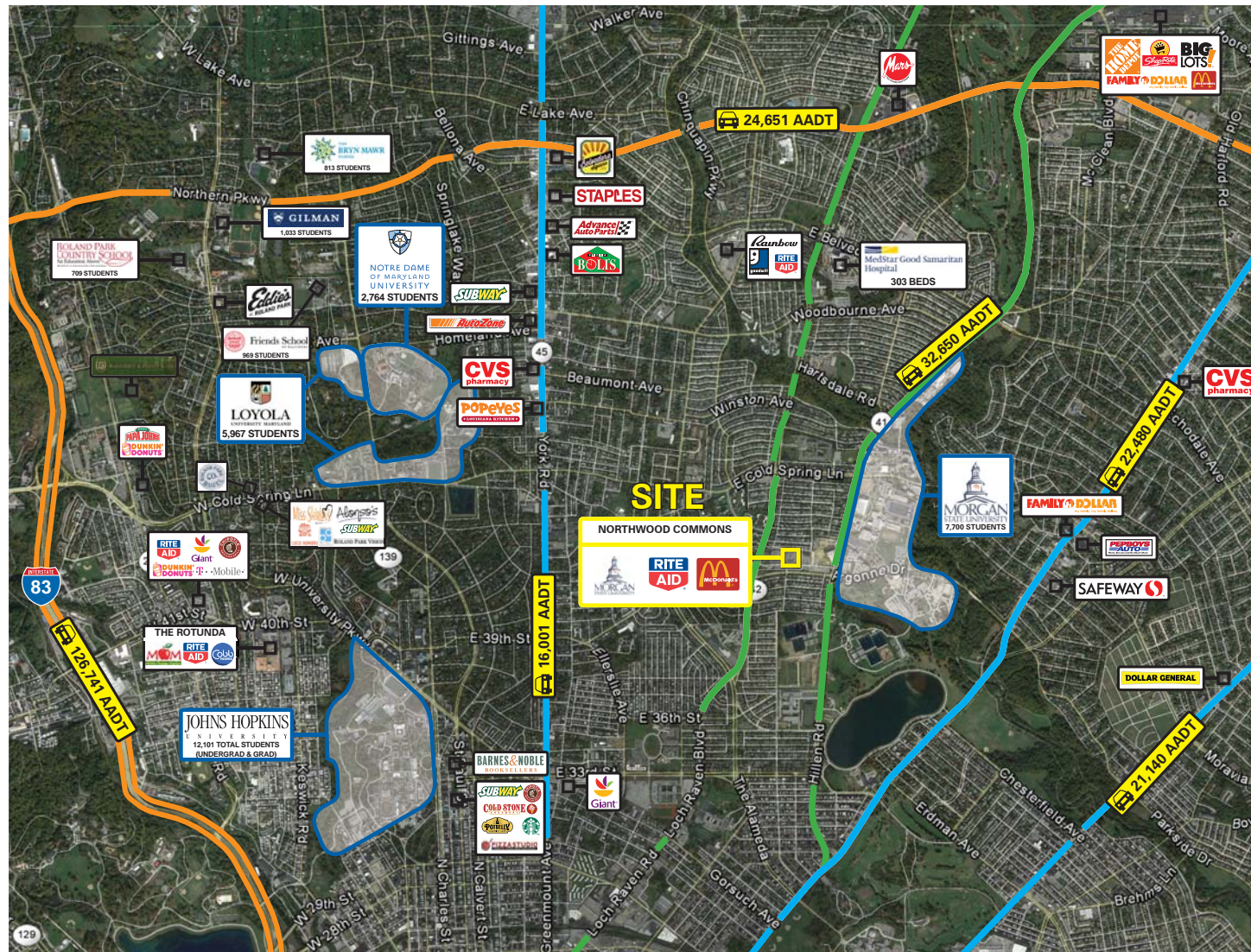
SEGALL GROUP COMMERCIAL REAL ESTATE

410.753.3000 OFFICE 605 South Eden Street Suite 200 Baltimore, MD 21231	202.833.3830 OFFICE 1600 Wilson Boulevard Suite 930 Arlington, VA 22209
---	---

segallgroup.com • RETAIL ORIENTEDSM
Members of the International Council of Shopping Centers and Realty Resources.

AERIAL Northwood Commons • 1500 Havenwood Road • Baltimore, MD 21218

RETAIL SPACE FOR LEASE



FOR MORE INFORMATION, CONTACT:

Andrew G. Segall
 asegall@segallgroup.com
 410.960.0361 **CELL**
 410.753.3000 **OFFICE**

Jonathan Garritt
 jgarritt@segallgroup.com
 443.223.0662 **CELL**
 410.753.3000 **OFFICE**

SEGALL GROUP COMMERCIAL REAL ESTATE

410.753.3000 **OFFICE**
 605 South Eden Street
 Suite 200
 Baltimore, MD 21231

202.833.3830 **OFFICE**
 1600 Wilson Boulevard
 Suite 930
 Arlington, VA 22209

segallgroup.com • RETAIL ORIENTEDSM

Members of the International Council of Shopping Centers and Realty Resources.