

**FOR LEASE** Available Immediately



# Eastpoint Center

7930-7938 Eastern Avenue / Baltimore, MD 21224






## Overview

New retail proposed at this Redner's Market-anchored shopping center in Essex, MD. Direct visibility and access from Eastern Avenue (23,000+ AADT). Possibilities include potential pad site(s) and/or multi-tenant retail. Eastpoint Mall and the Baltimore Beltway (I-695) are immediately adjacent.

## Quick Facts

Availability	Immediate
Size	7,555 square feet; Out Lot Development Pad
Rental Rate	\$20.00 per square foot, NNN (New Multitenant Retail) \$75,000 per year (Out Lot Pad Ground Lease)
Zoning	BM AS

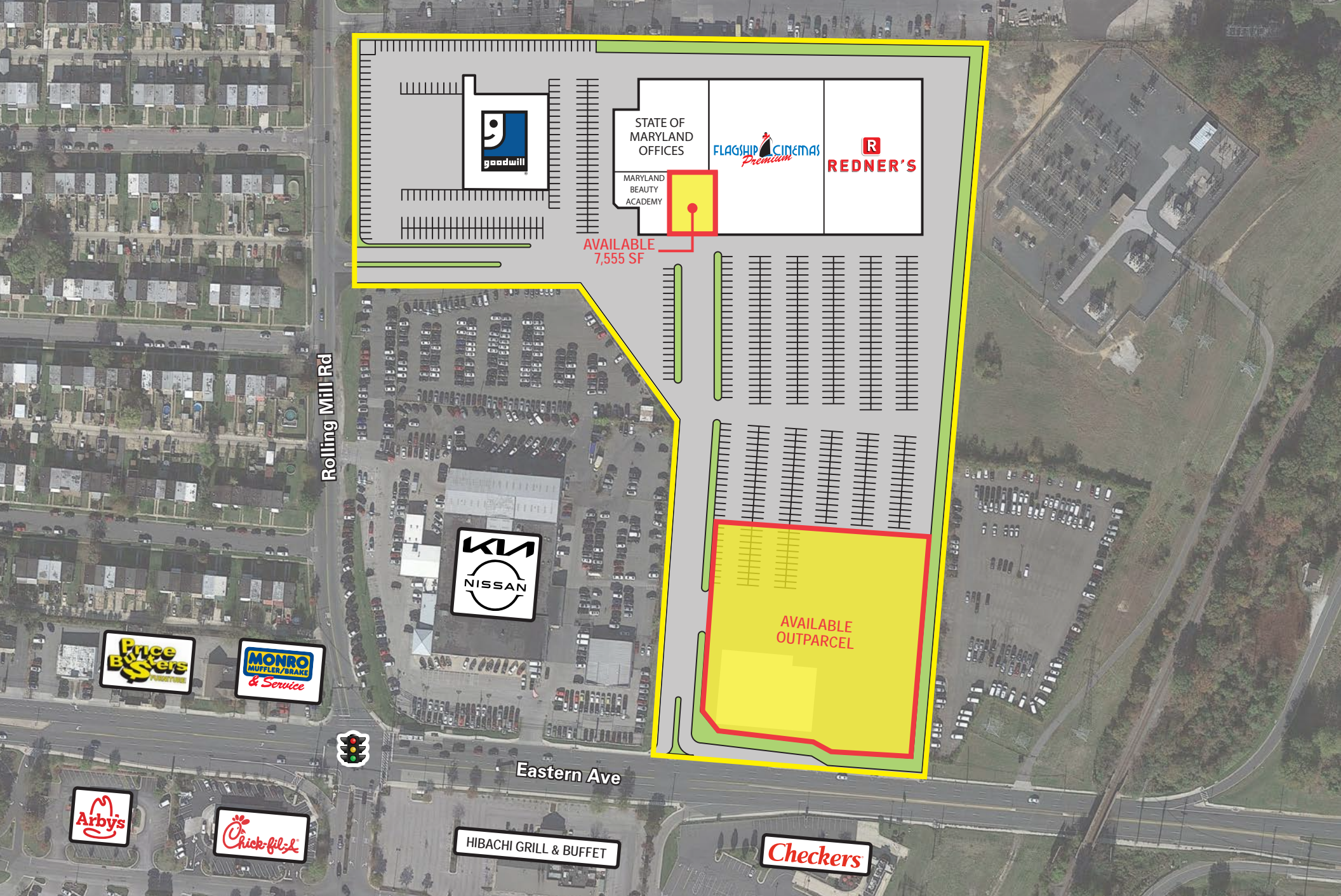


2021 Demographics	1 mile	3 miles	5 miles
 POPULATION	7,929	113,955	344,110
 HOUSEHOLDS	2,869	44,198	134,740
 AVG. HH INCOME	\$69,697	\$70,731	\$79,692
 DAYTIME POPULATION	5,424	50,199	136,266
 TRAFFIC COUNTS	23,352 AADT (Eastern Avenue)	5,432 AADT (Rolling Mill Road)	

**segall**  
GROUP

COMMERCIAL REAL ESTATE

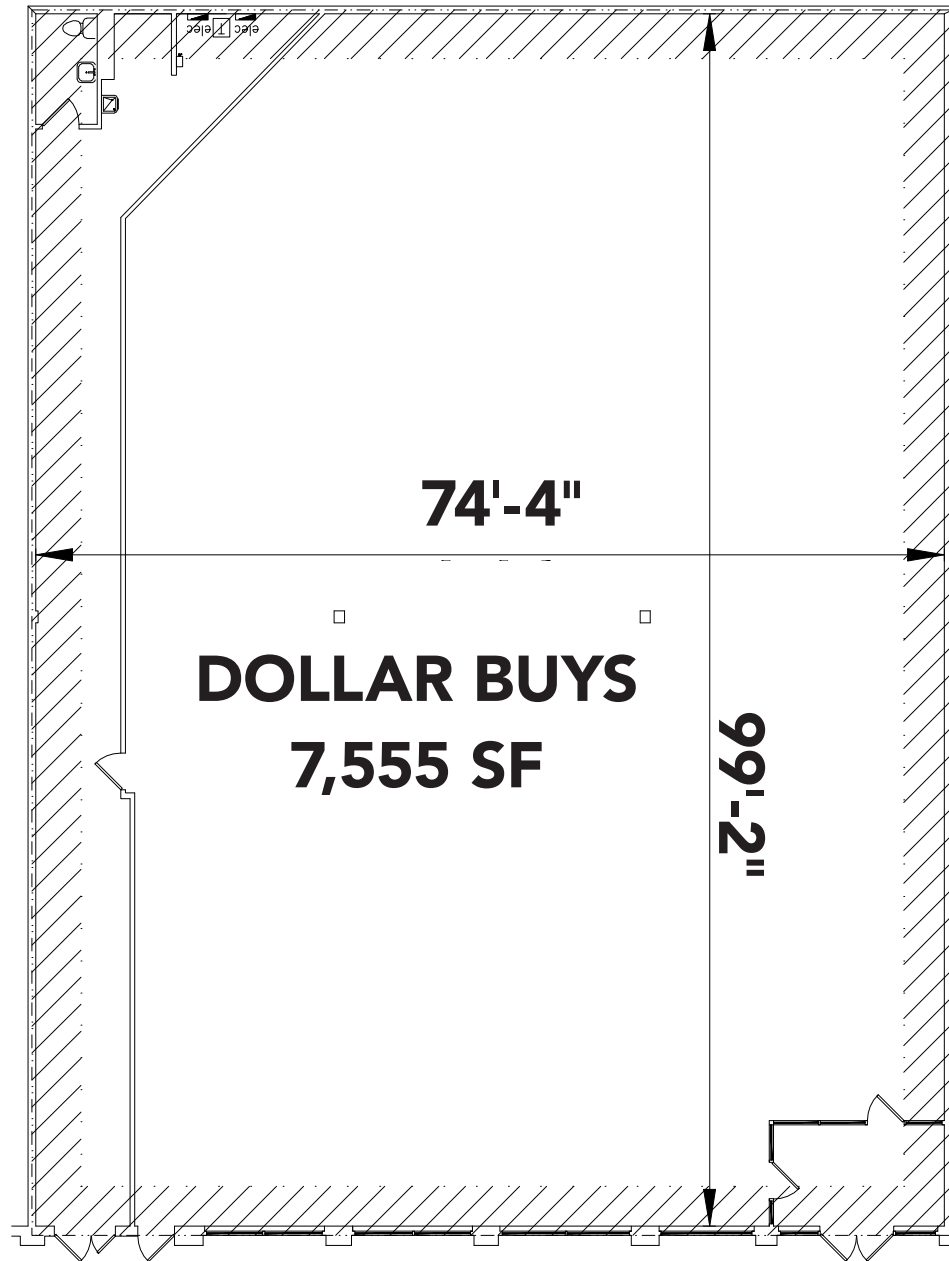




# Site Plan



# STATE OF MARYLAND OFFICES



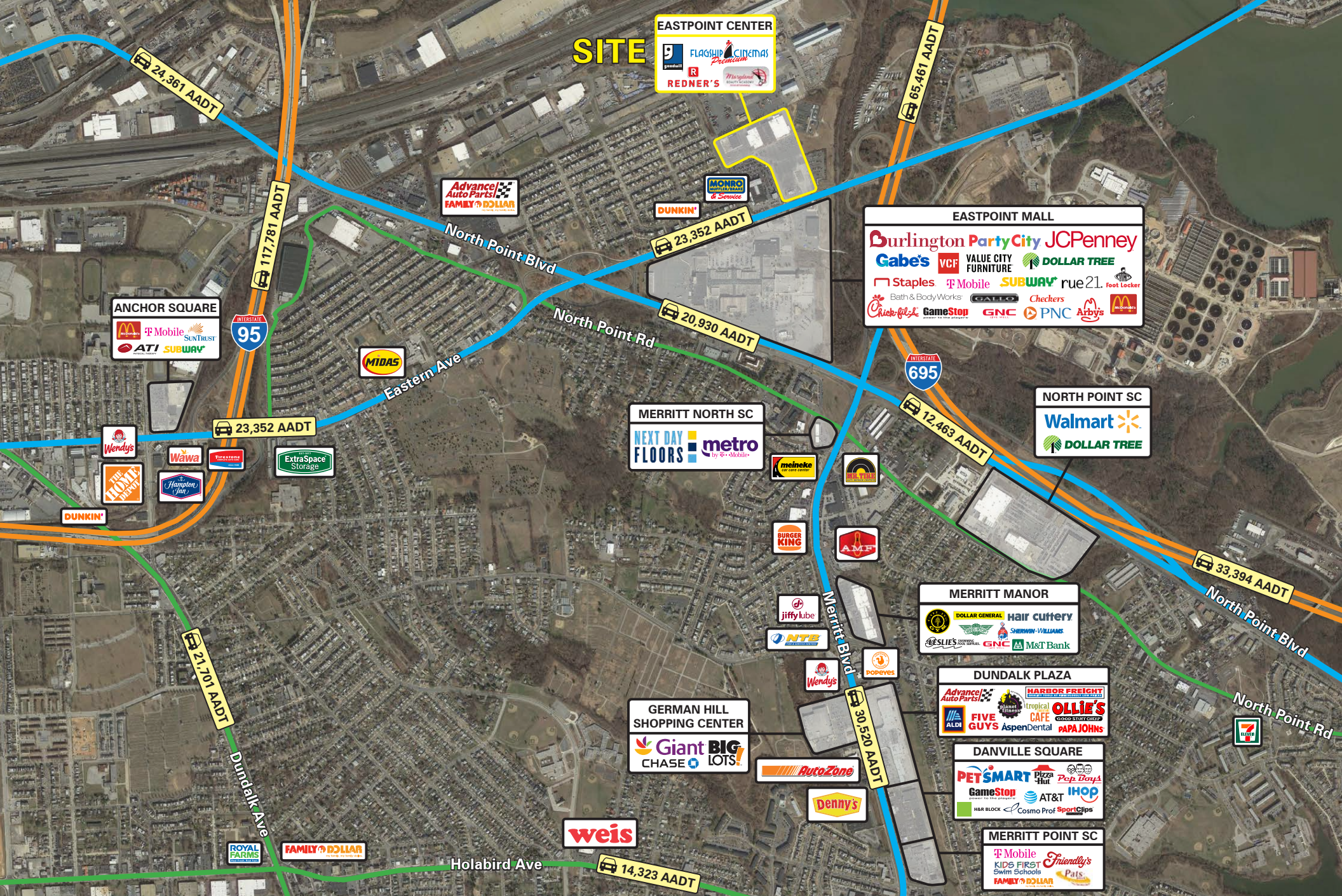
Available  
7,555 SF













# Interested? Contact:

**Andrew Segall**

✉ asegall@segallgroup.com

☎ 410.753.3947

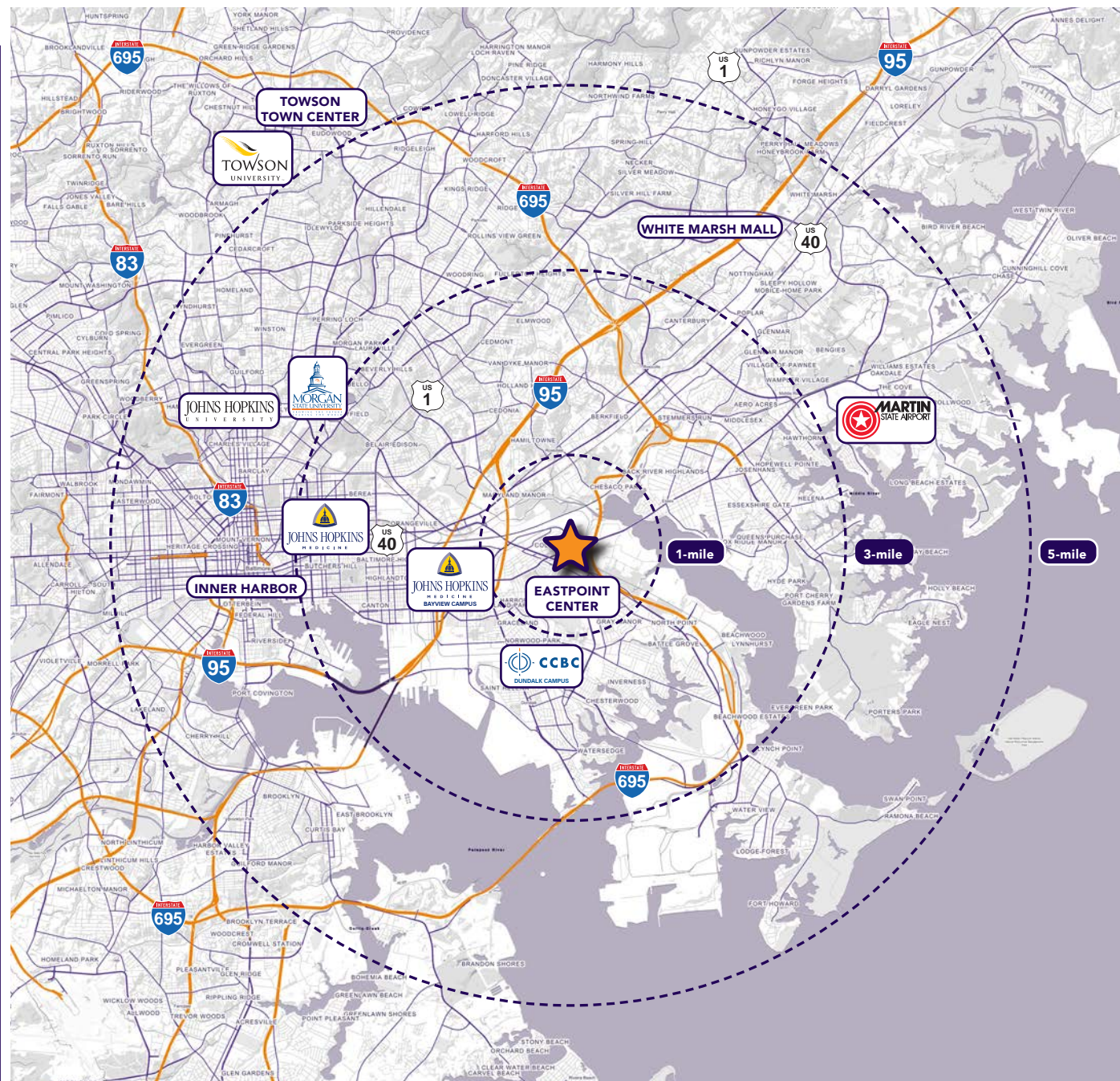
📞 410.960.0361

**Marcelo Grosberg**

✉ mgrosberg@segallgroup.com

☎ 410.753.3948

📞 443.927.6100



## Maryland

605 South Eden Street  
Suite 200  
Baltimore, MD 21231  
410.753.3000

## DC • Northern VA

8245 Boone Boulevard  
Suite 800  
Tysons, VA 22182  
202.833.3830

## Richmond

2400 Old Brick Road  
Suite 54  
Glen Allen, VA 23060  
804.336.2501

## Online

www.segallgroup.com

Member of  
**REALTY  
RESOURCES**

**RETAIL  
READY.**

**segall**  
GROUP